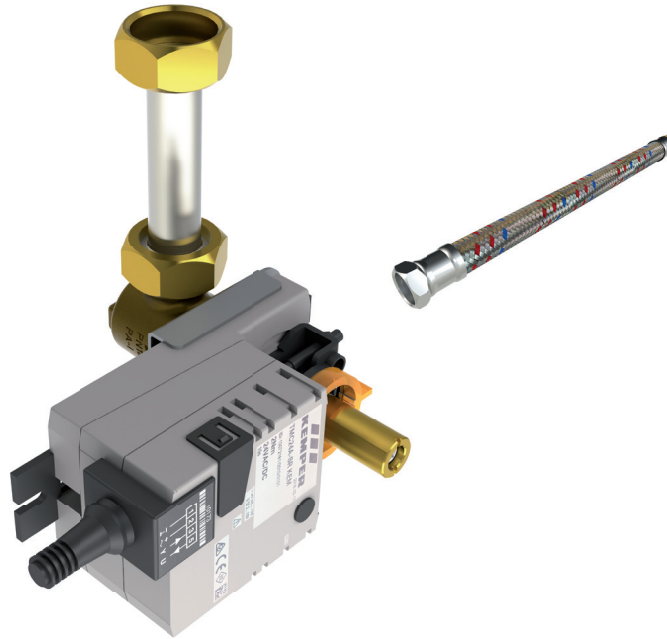


Installation instructions

Water supply set plus Fig. 369 22
FK-5 Break Tank Station



KEMPER
DRIVING PROGRESS



Safety instructions for installation, maintenance and operation

Installation and usage

Prior to commencing installation or usage read instructions carefully and follow all directions! Pass these instructions on to the system operator and retain for later reference!

Warning! Installation and maintenance must only be performed by competent and qualified professionals with a qualification in sanitary plumbing. Electrical installation must only be performed by professionals qualified for electrical facilities!

Warning! Local rules and regulations for sanitary plumbing as well as accident prevention must be observed as a matter of priority.

Note! It is essential to carry out a leak test of the water-bearing components as well as a functional test after installation.



Danger! To isolate from mains disconnect the mains plug prior to commencing any maintenance work.

Usage

The Water Supply Set Plus shall only be used as a secondary inlet (for drinking- or rainwater) for the FK-5 break tank station. Every other usage is considered misuse.

Only use the device
- in sound condition
- as intended

Warning information

Please read and follow the warning information in these instructions. Disregarding the warning information may lead to injury or material damage!

Labelling of important warning information:



Danger! Electricity!
Indicates hazards that may result in severe or fatal injury.



Warning! Indicates hazards that may lead to injury, material damage or contamination of drinking water.



Note! Indicates hazards that may lead to damages to the system or malfunctions.

Important notes for the system operator

Medium	Water
Ambient temp., max.	40 °C
Ambient temp., min.	2 °C
Inflowing medium, temp. max.	35 °C
Inflowing medium, temp. min.	2 °C
Flow pressure, max.	DN 20/DN 25: 4 bar 0.4 MPa
Flow pressure, min	DN 20: 1 bar 0.1 MPa DN 25: 1.5 bar 0.15 MPa
Pressure stage	PN 10
Outlet pump pressure	DN 20: 4.3 bar 0.43 MPa DN 25: 5.9 bar 0.59 MPa



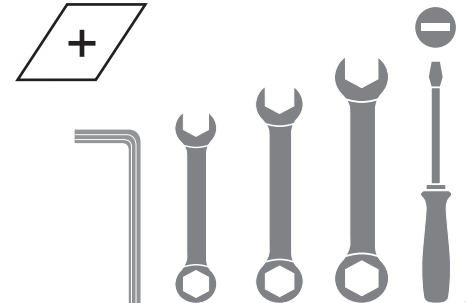
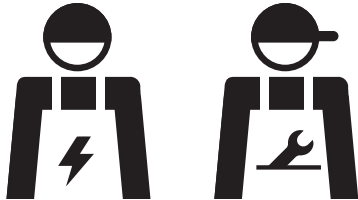
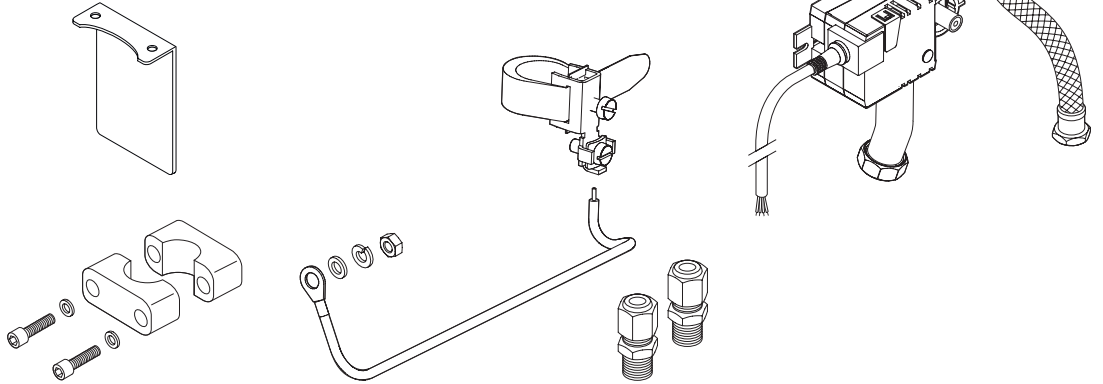
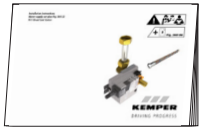
Warning! Under no circumstances must any water drawn be used as drinking water - even in small amounts!

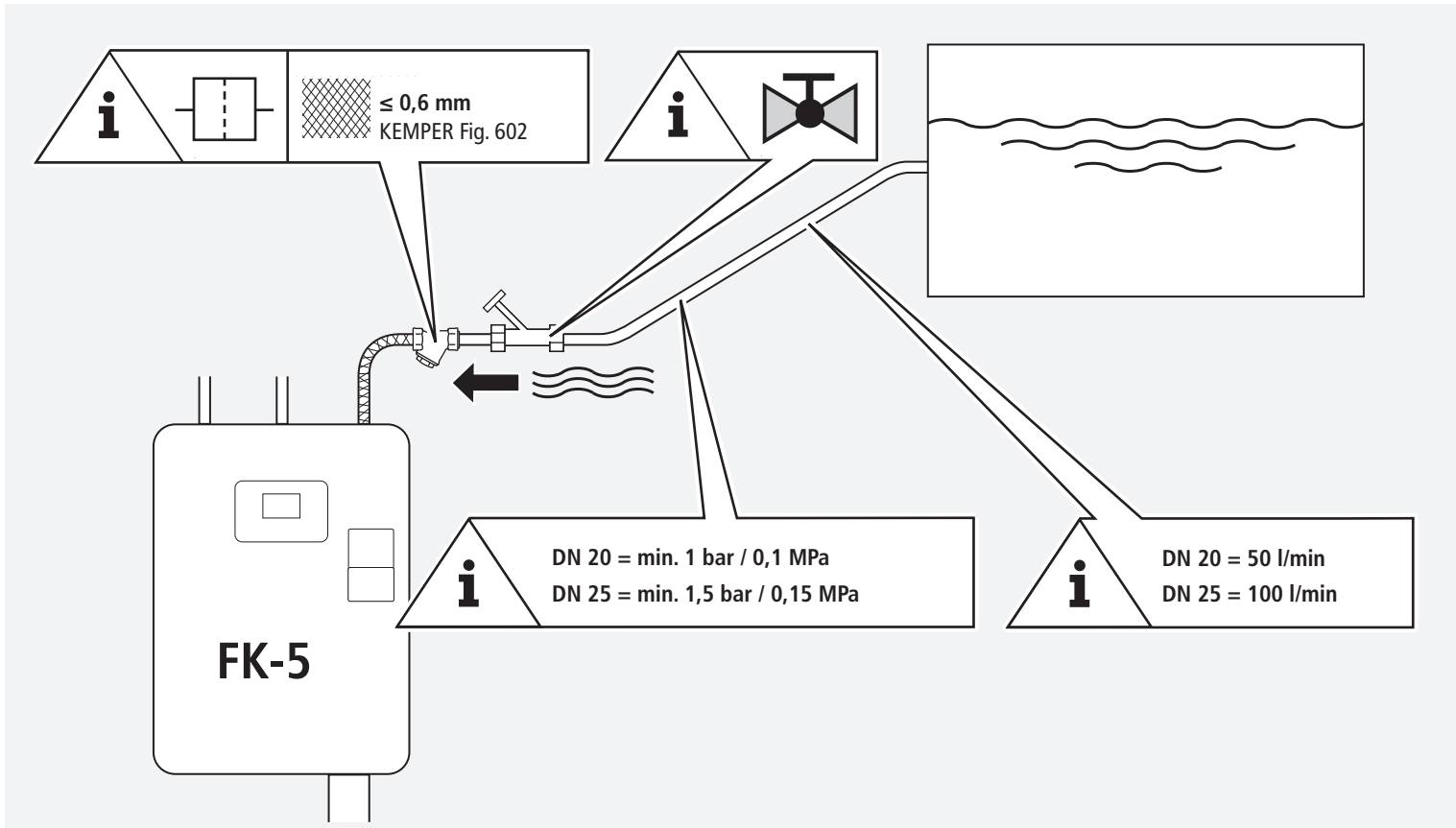
Warranty

No warranty or liability will be accepted in case of:
- Disregard of installation instructions.
- Damage due to faulty installation.
- Unauthorised product modifications.



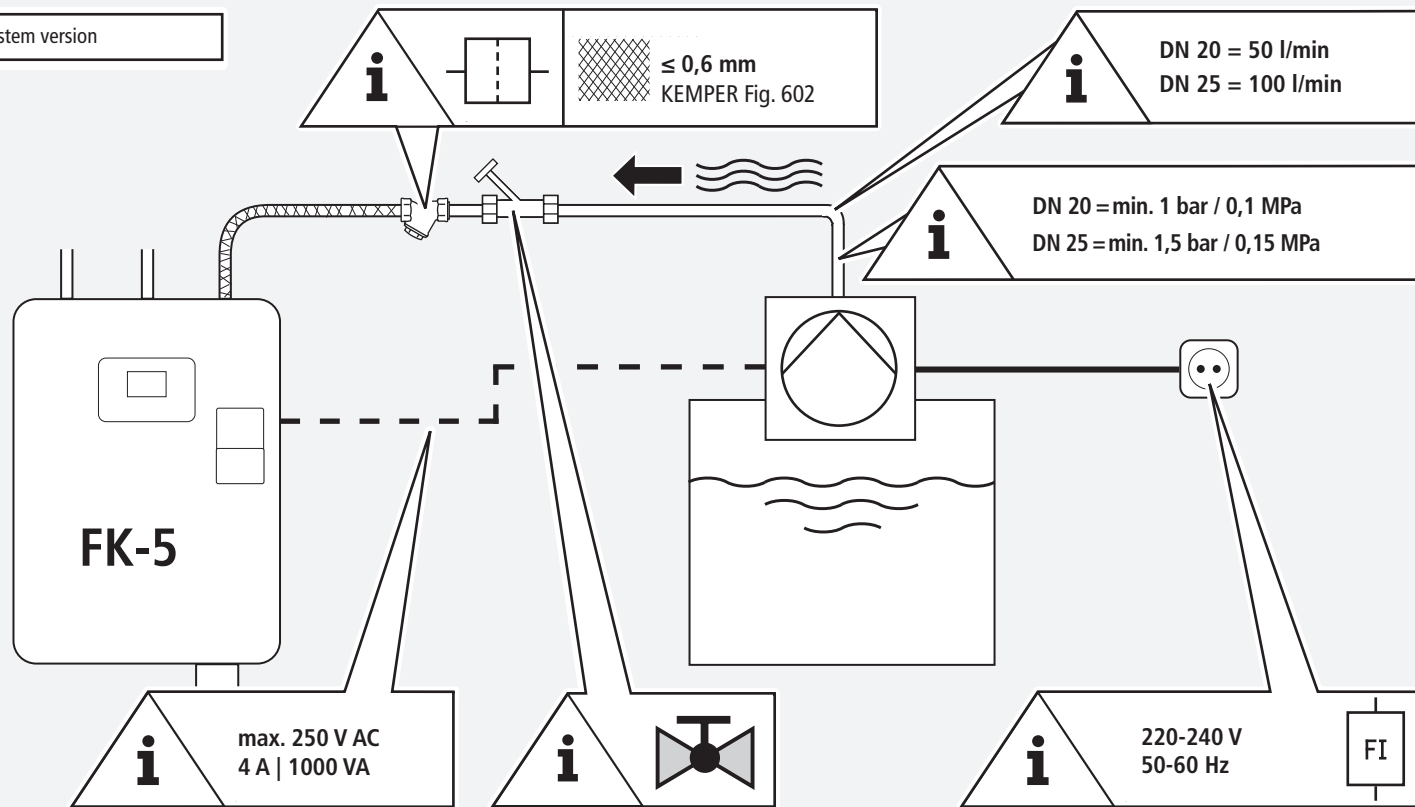
DN 20 Fig. 3692202000
DN 25 Fig. 3692202500



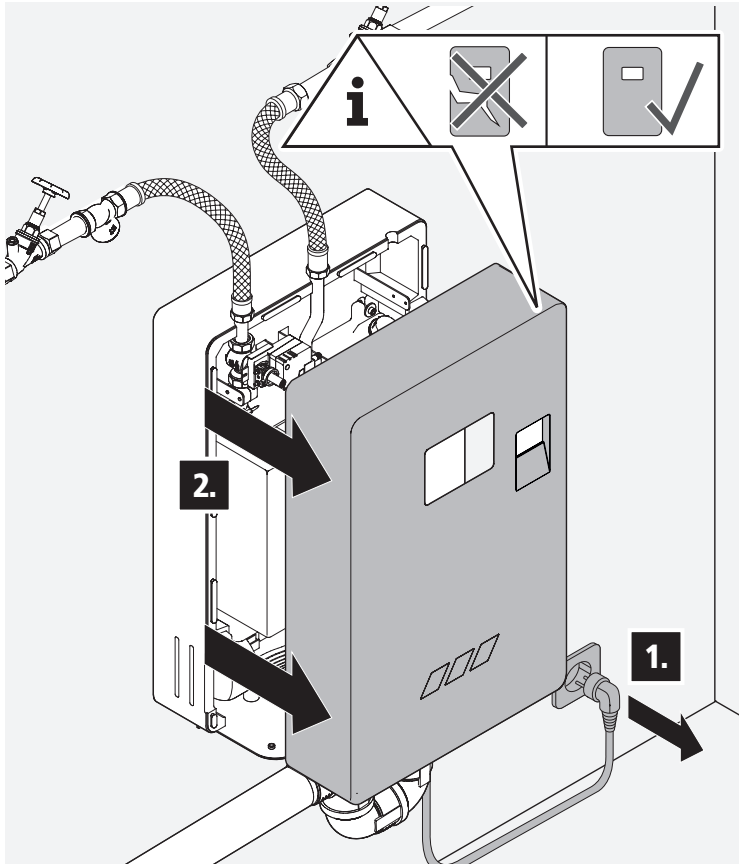


i**B**

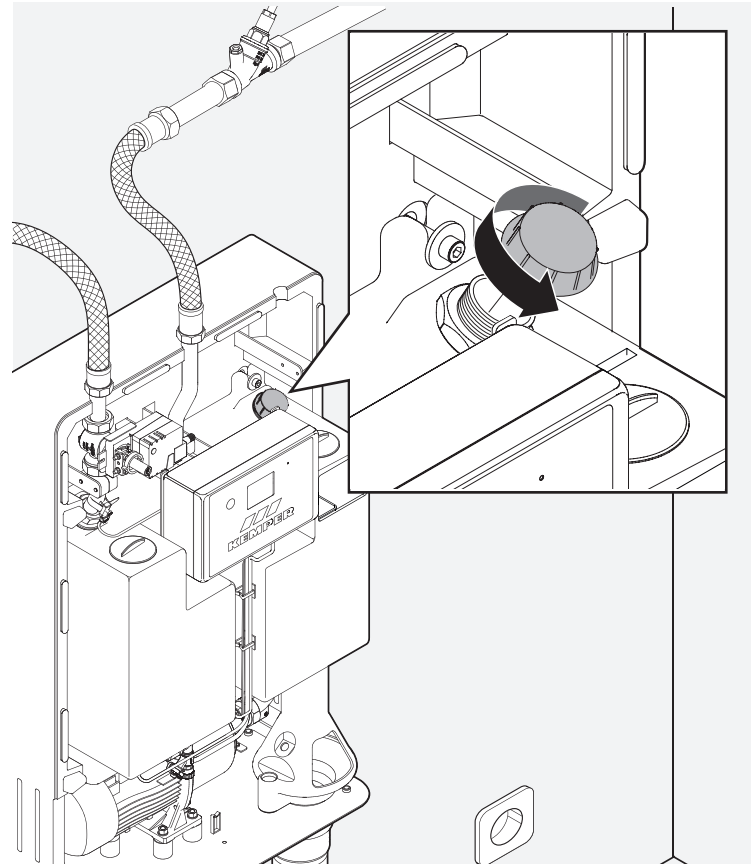
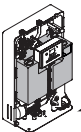
System version



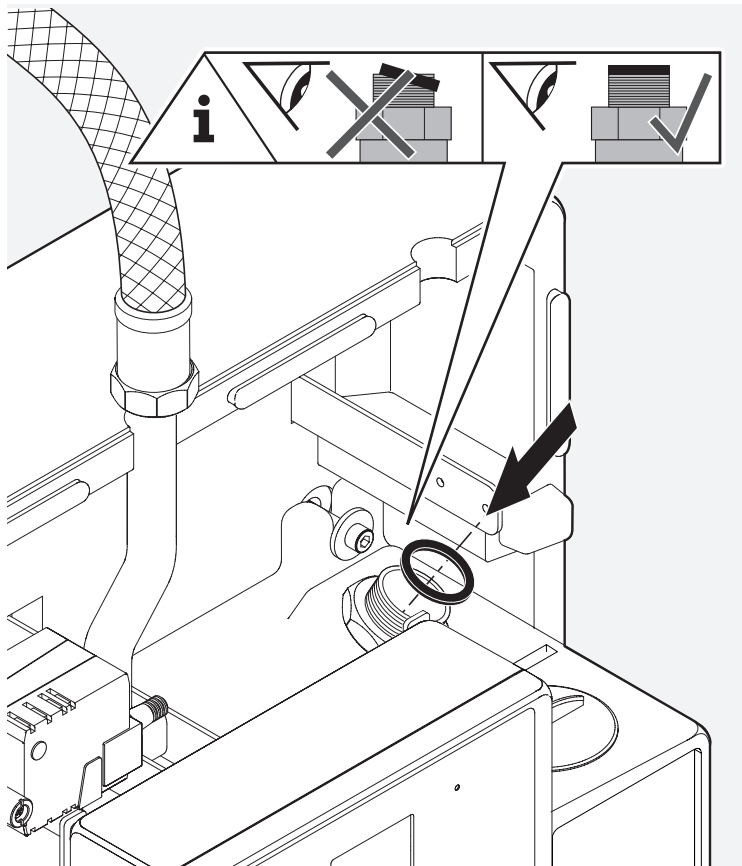
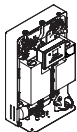
1



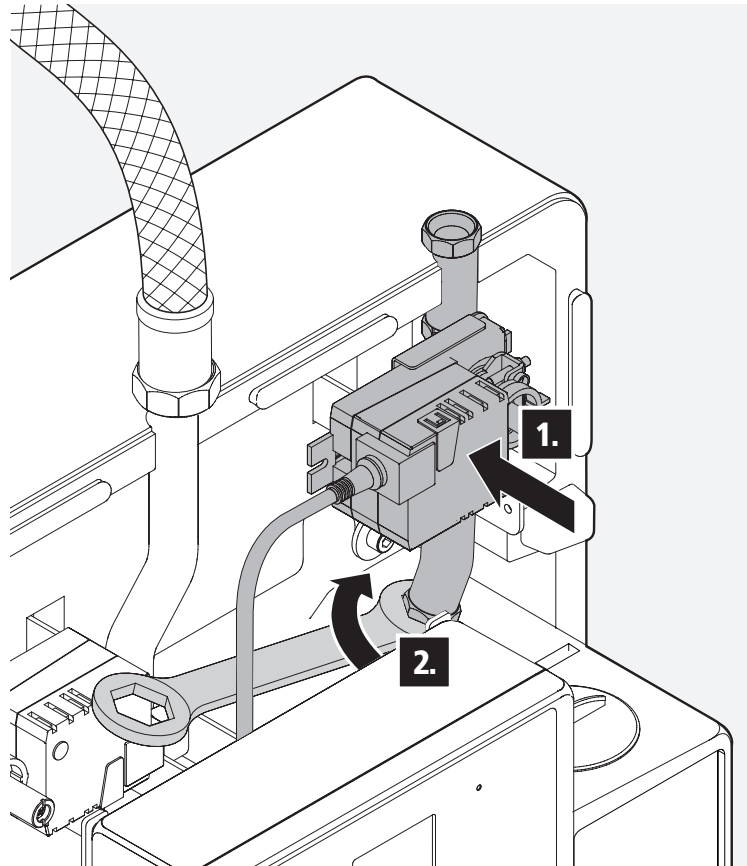
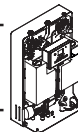
2



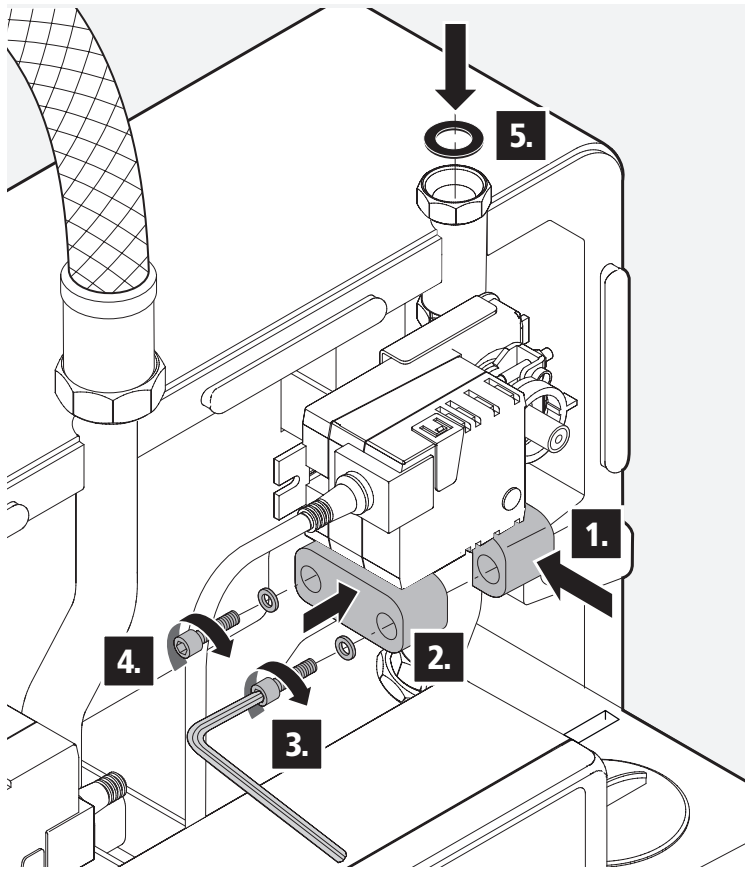
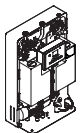
3



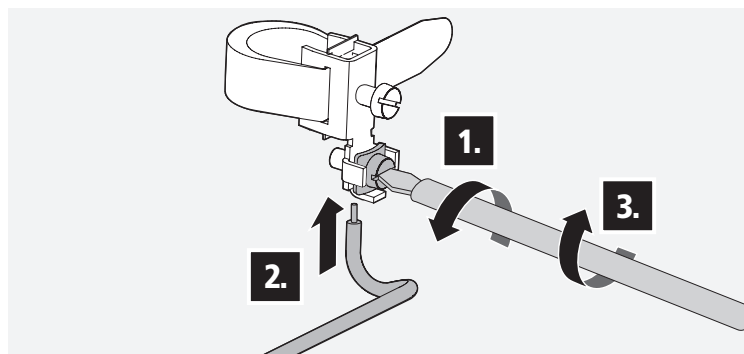
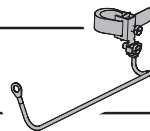
4



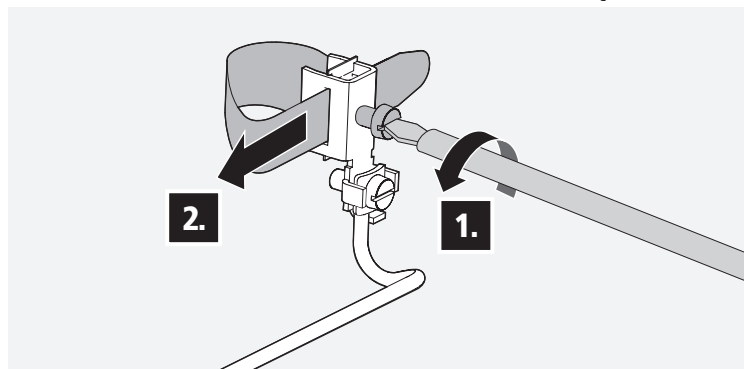
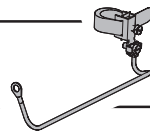
5

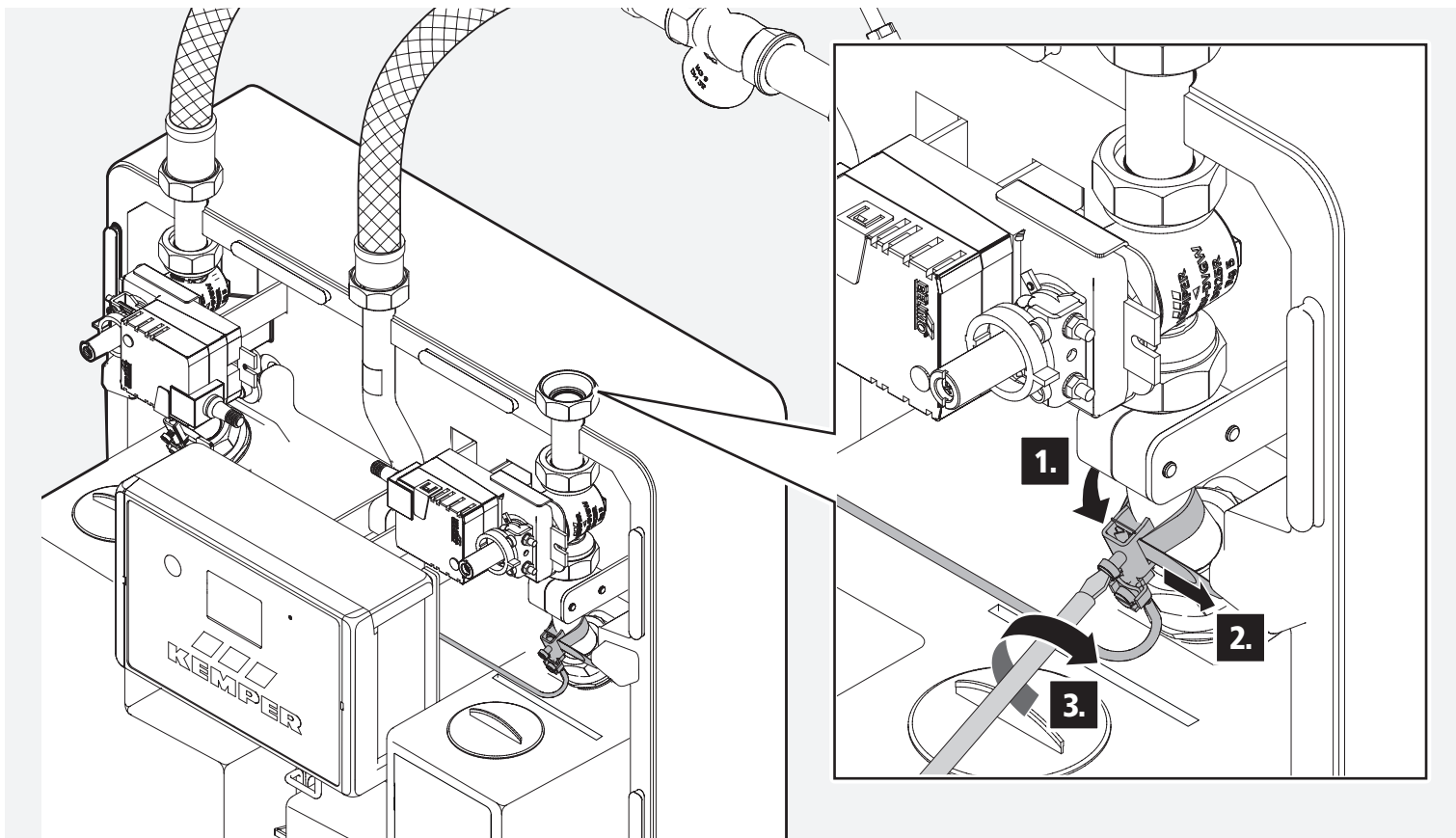
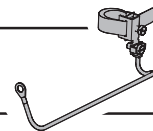


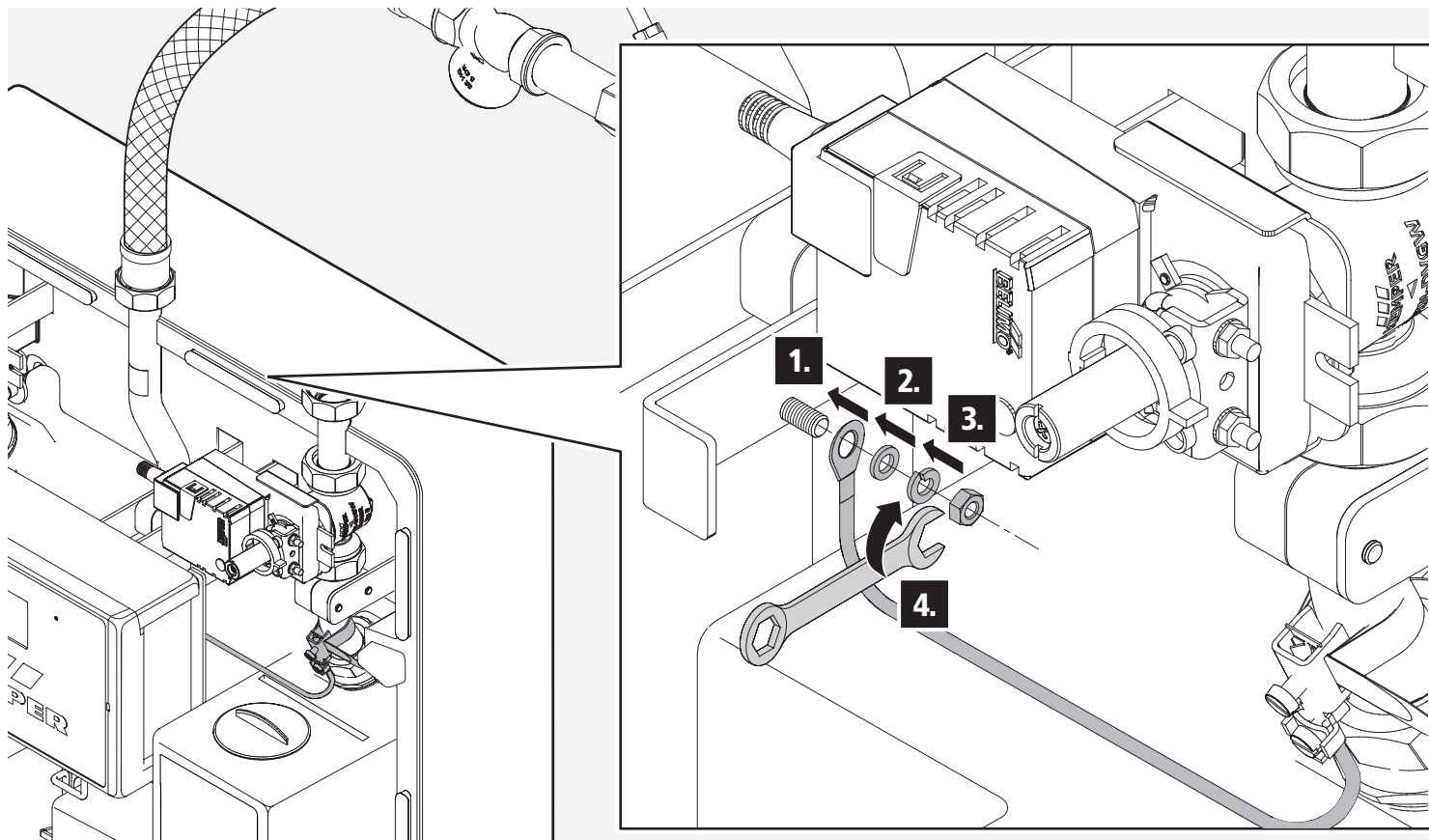
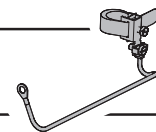
6

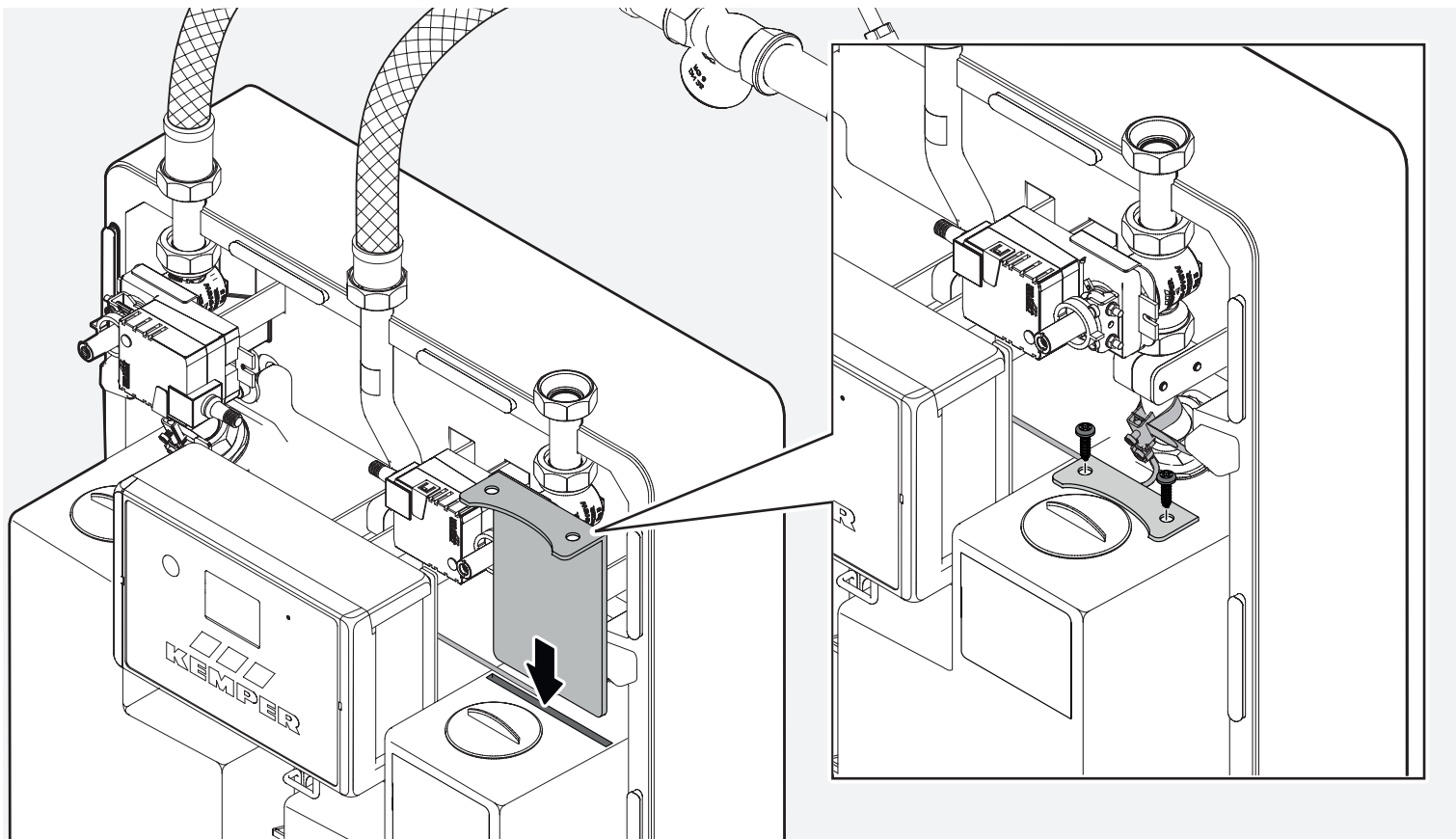
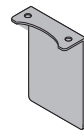


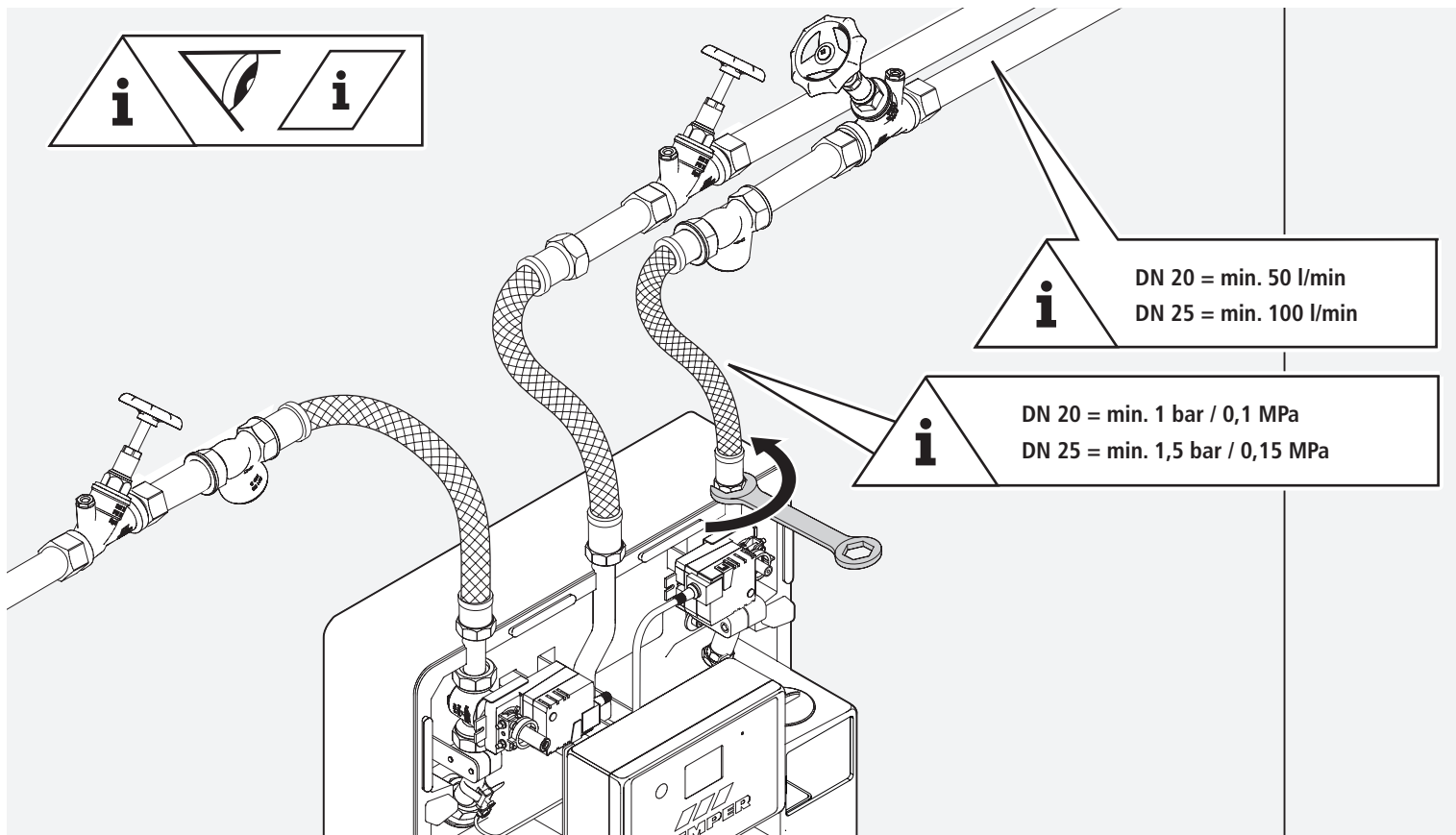
7



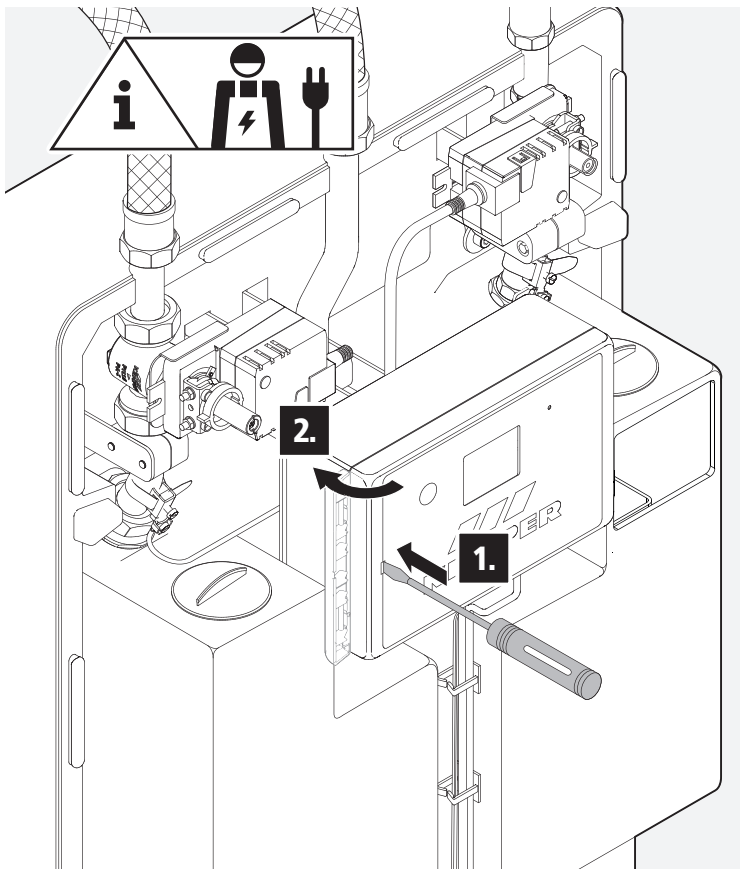
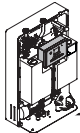




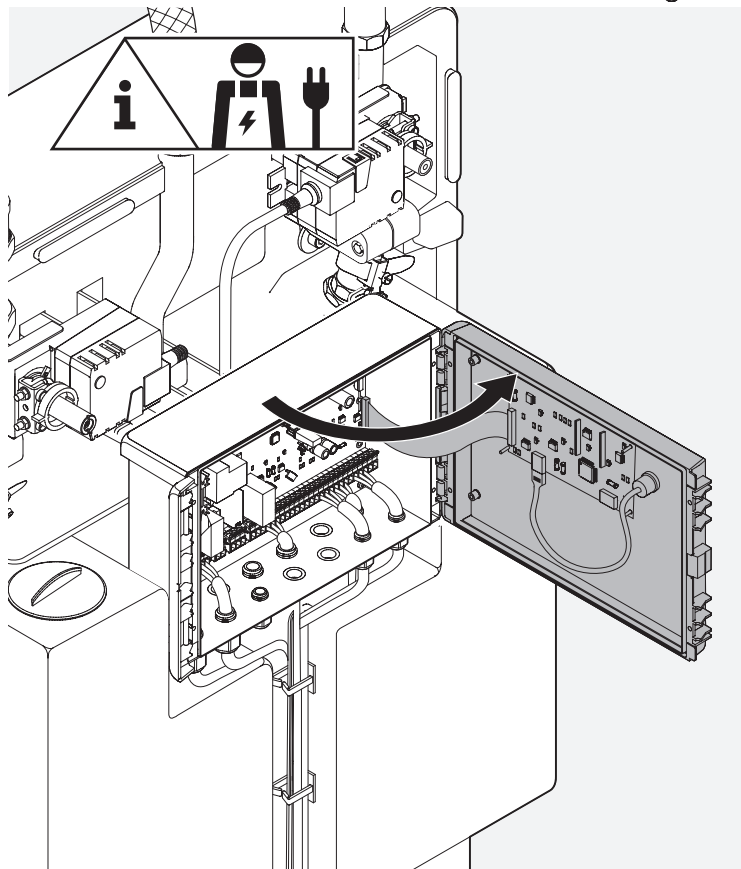
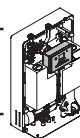




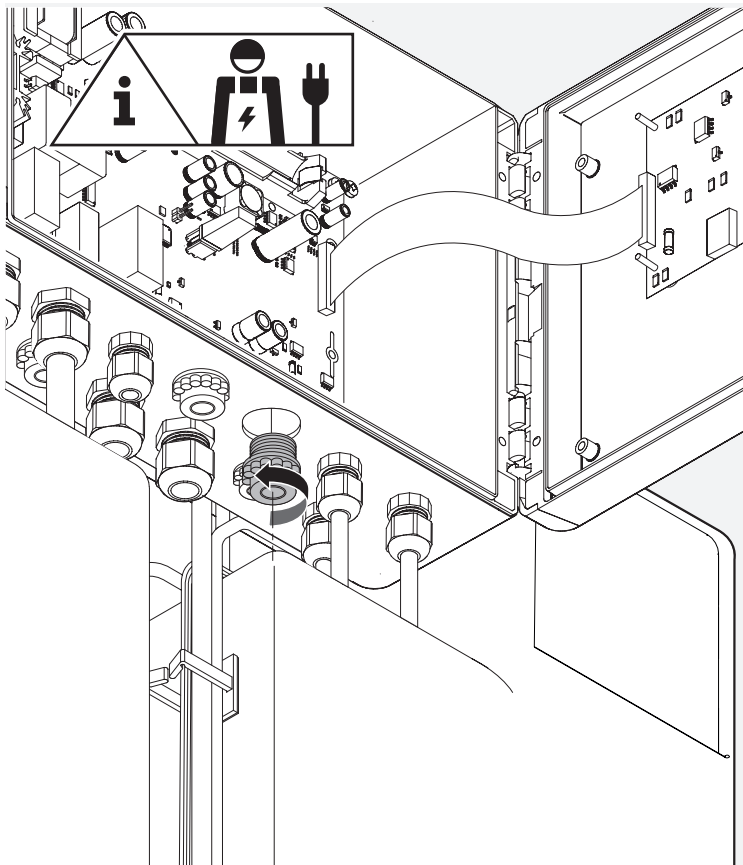
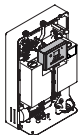
12



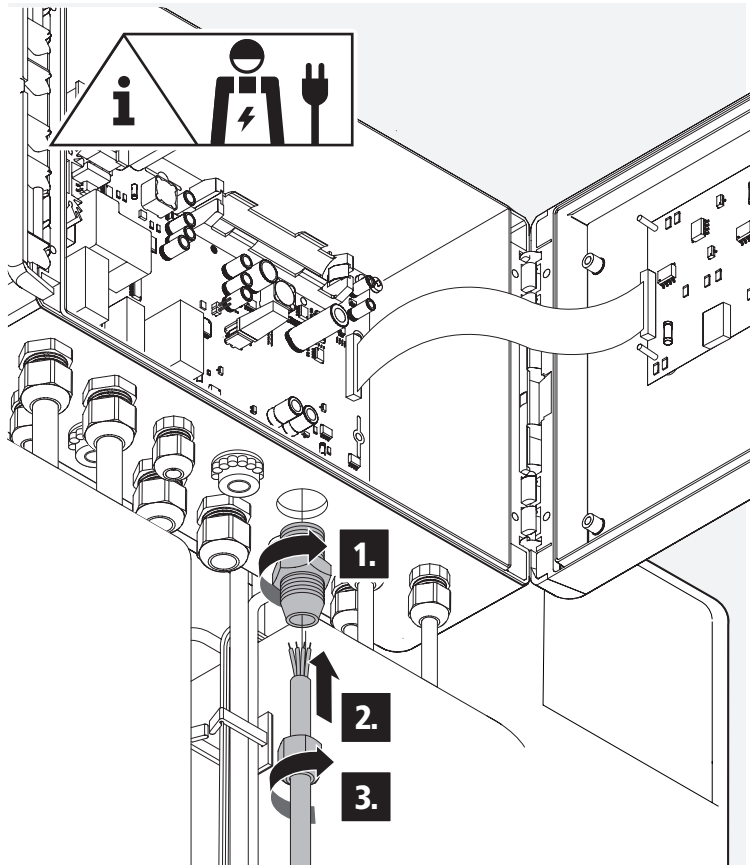
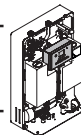
13

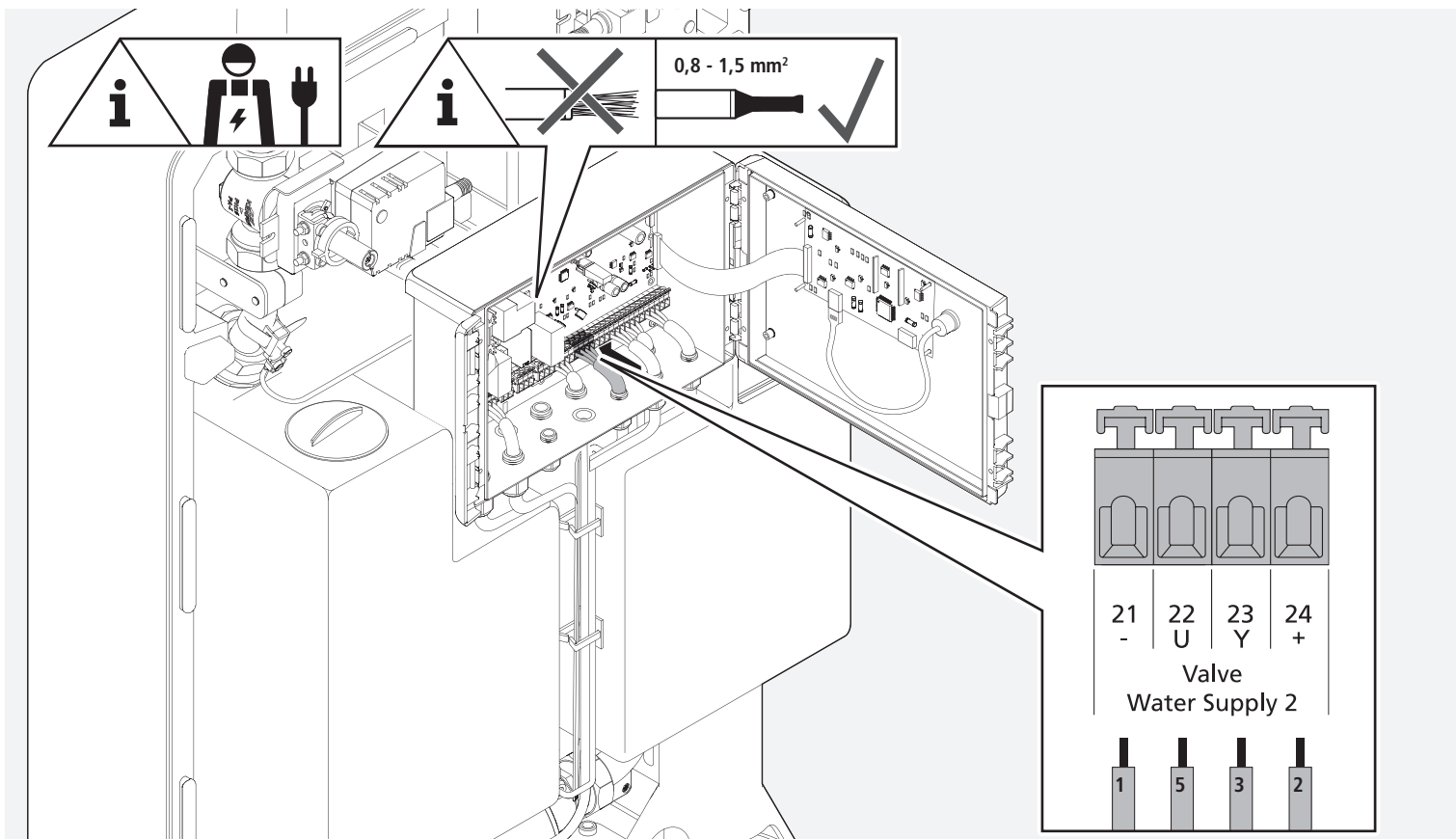


14

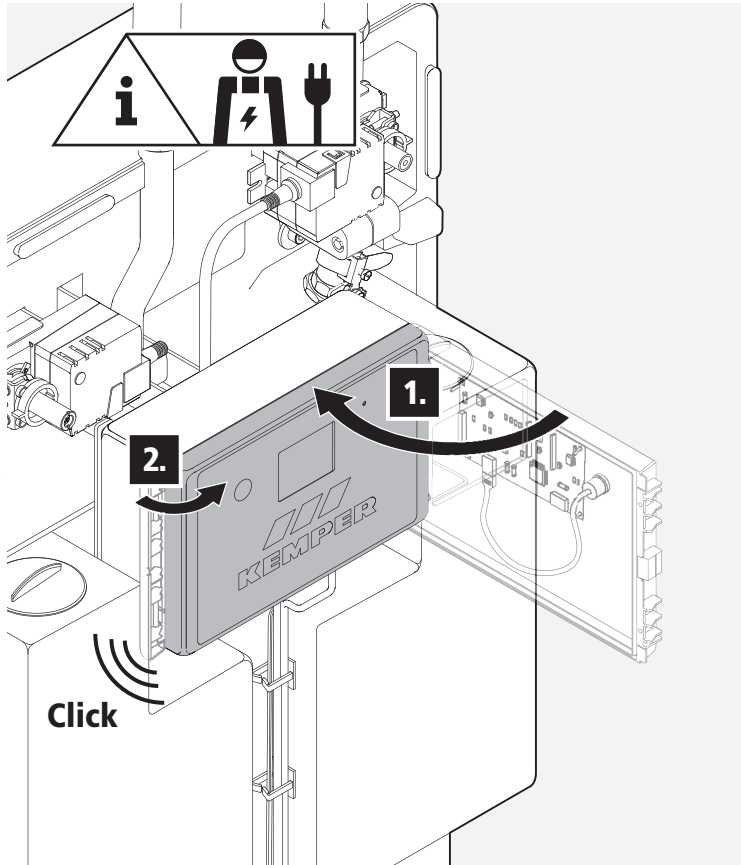
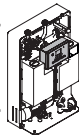


15

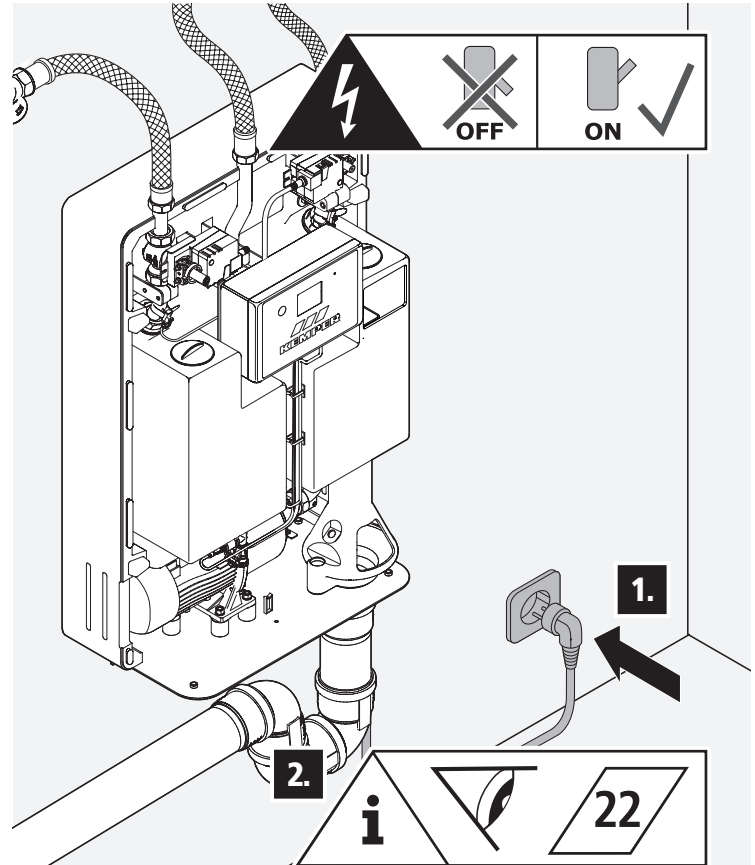
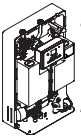


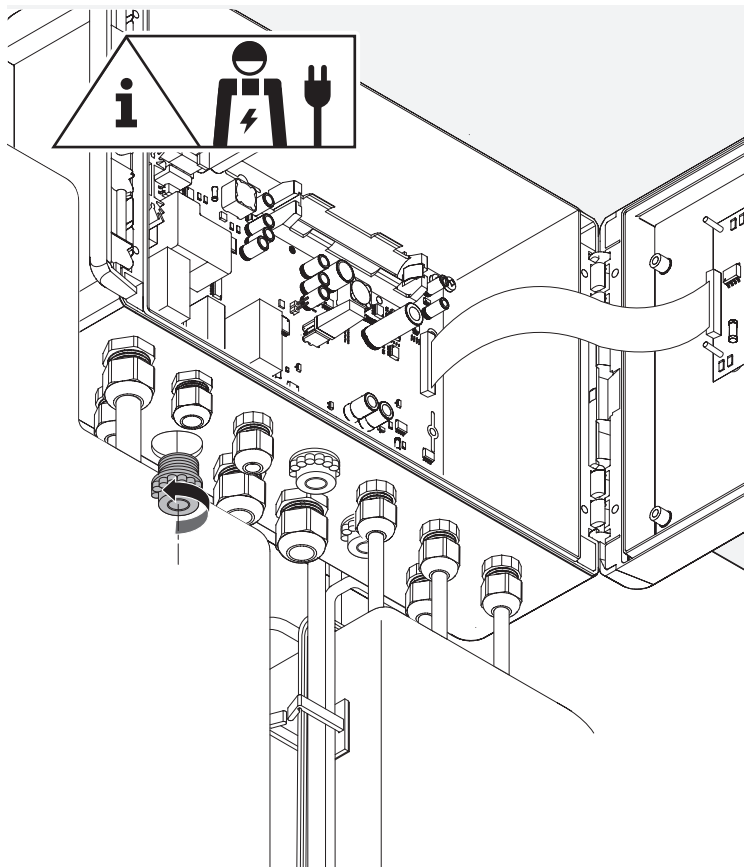
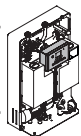
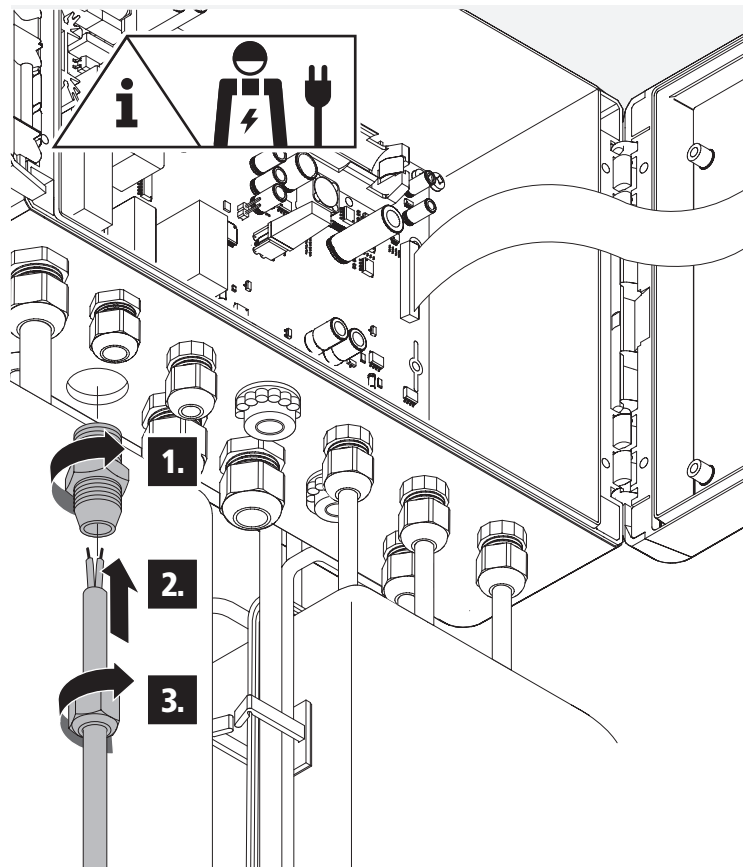


17 A



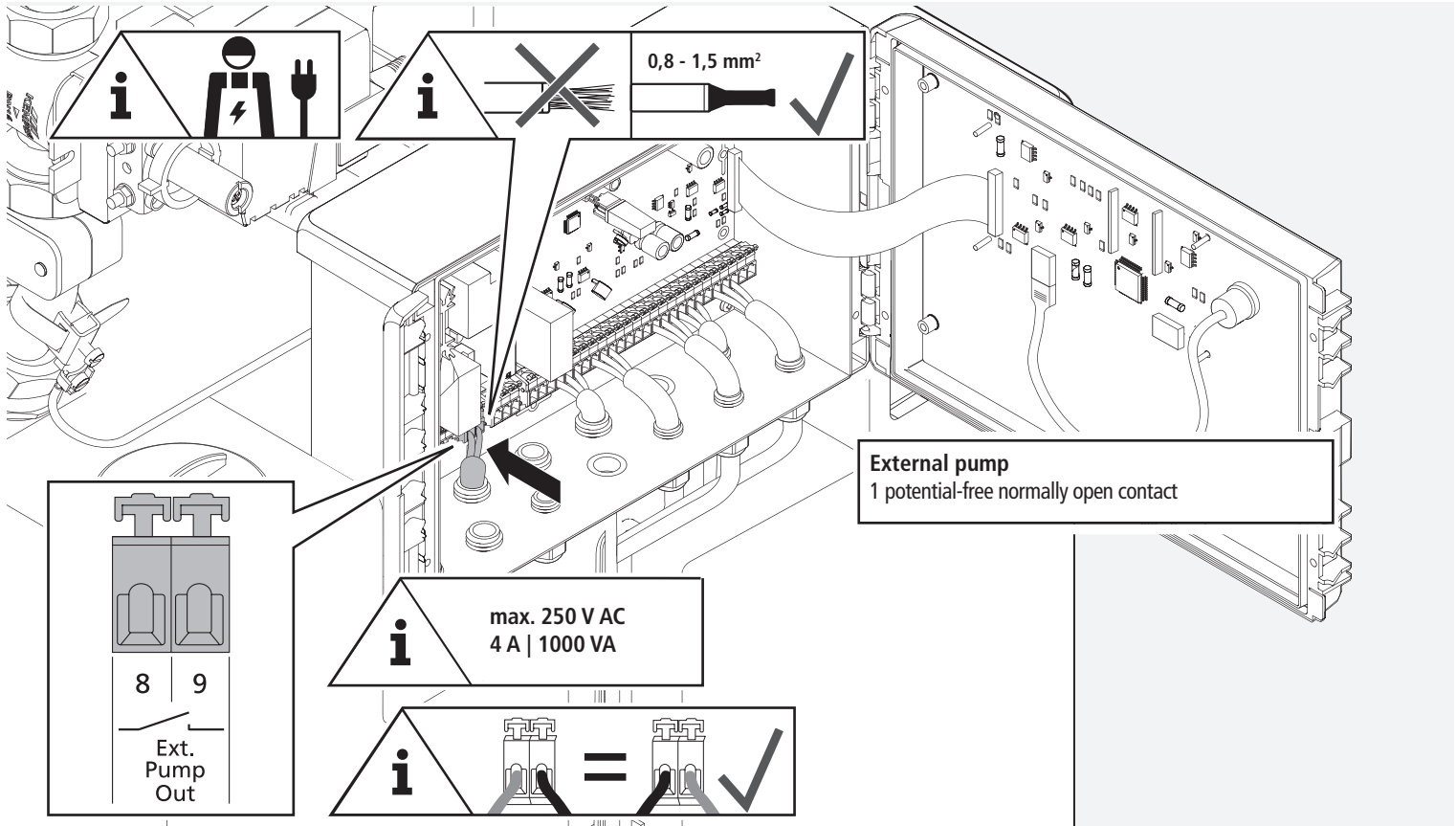
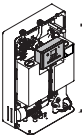
18 A



17**B****18****B**

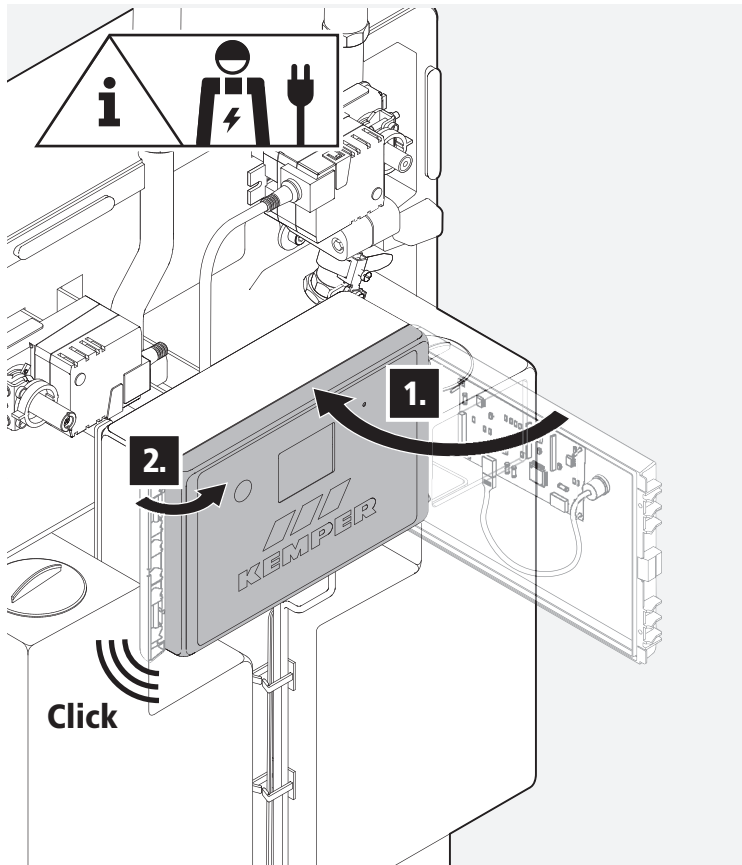
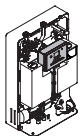
19

B



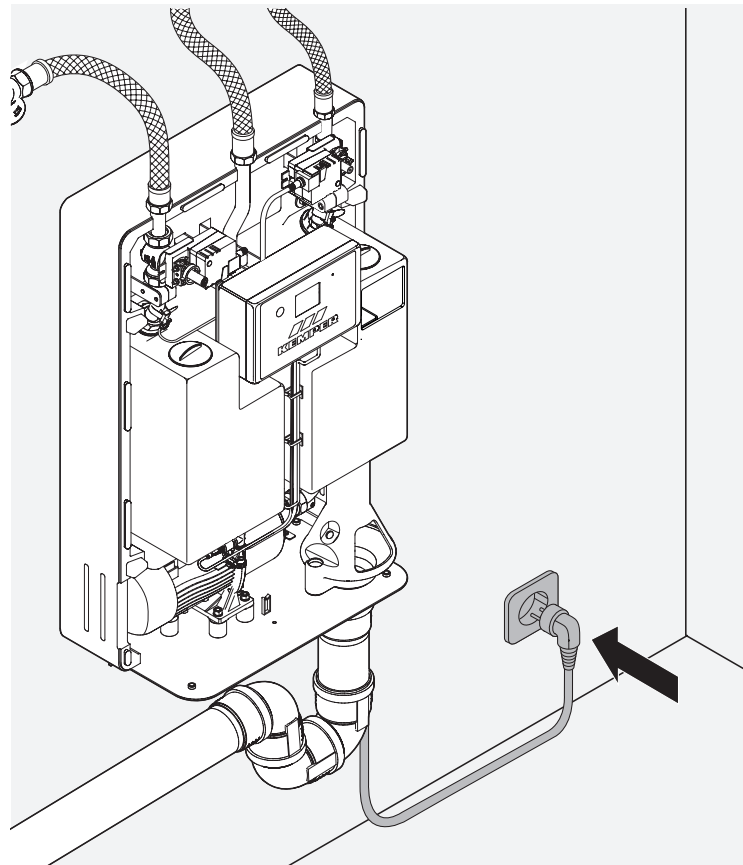
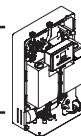
20

B



21

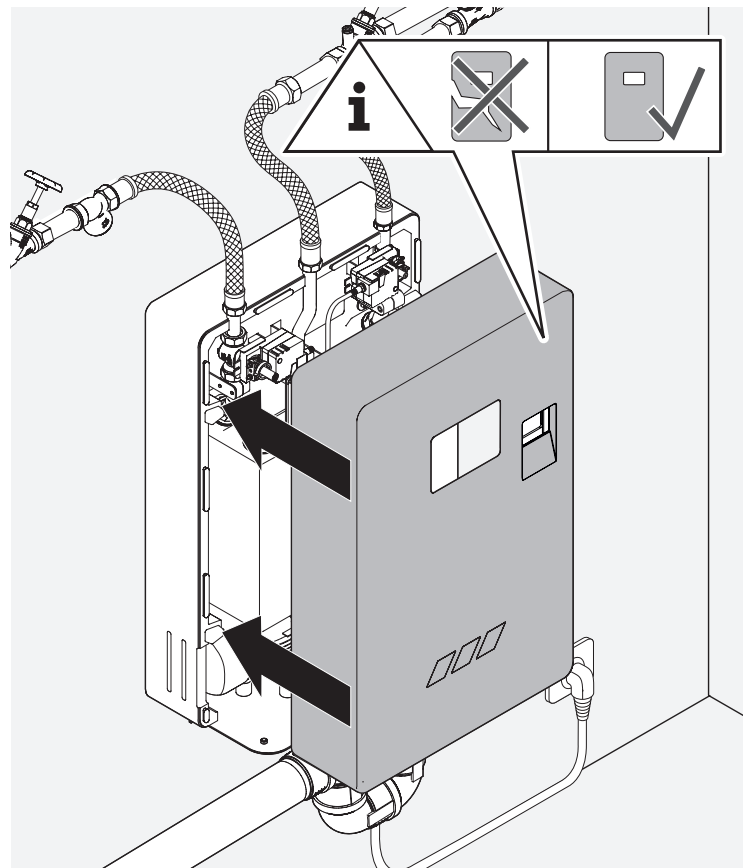
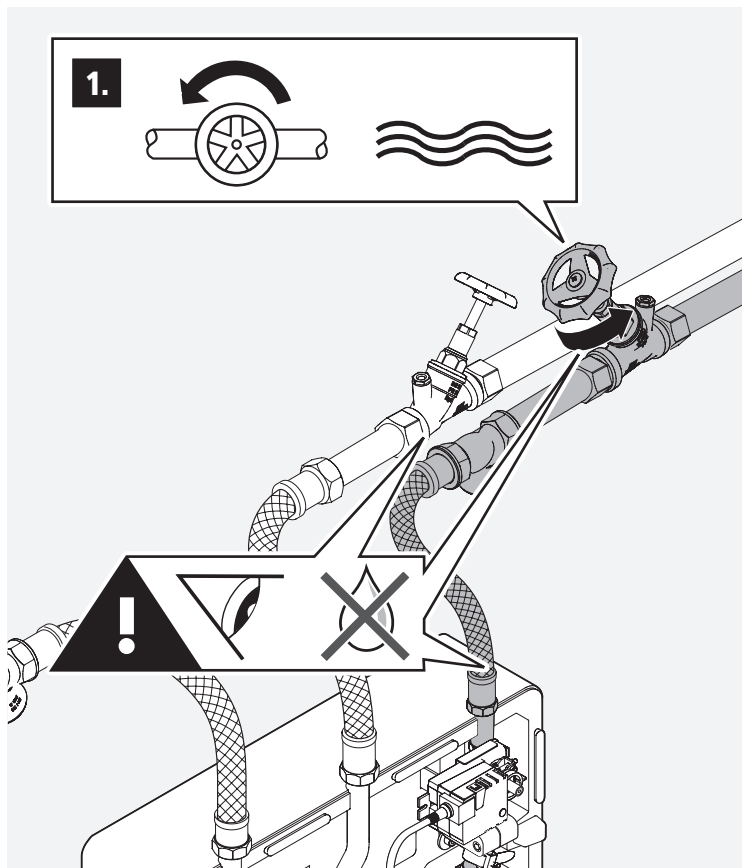
B



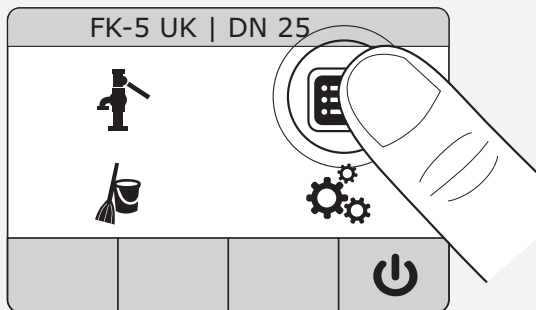
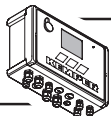
22



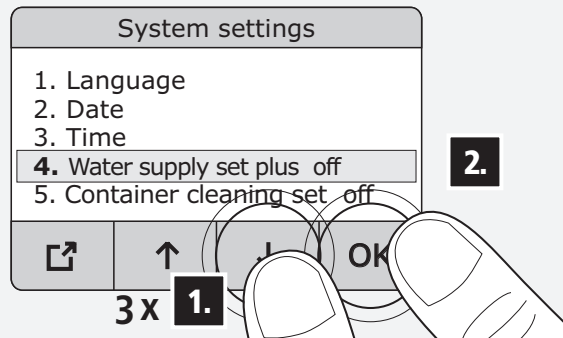
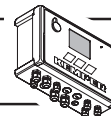
23



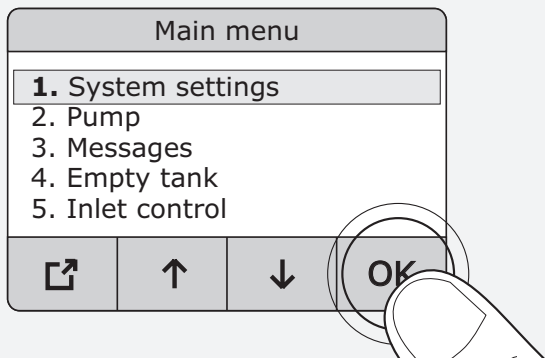
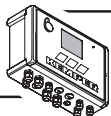
24



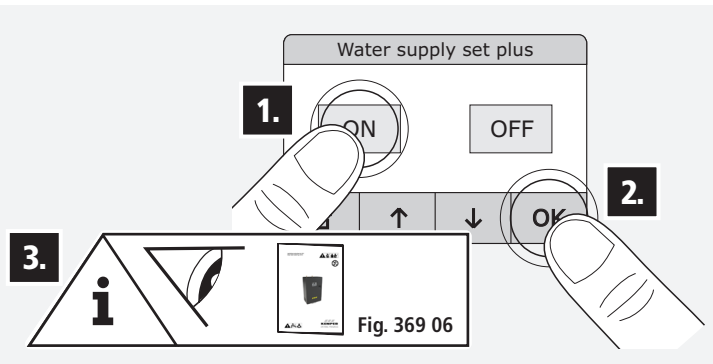
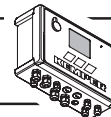
26



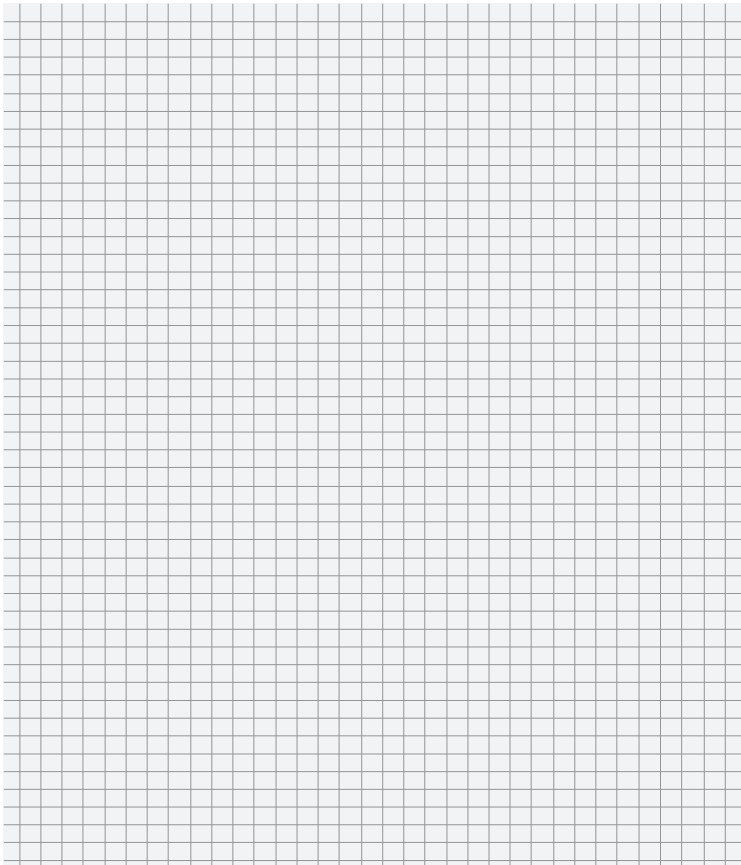
25

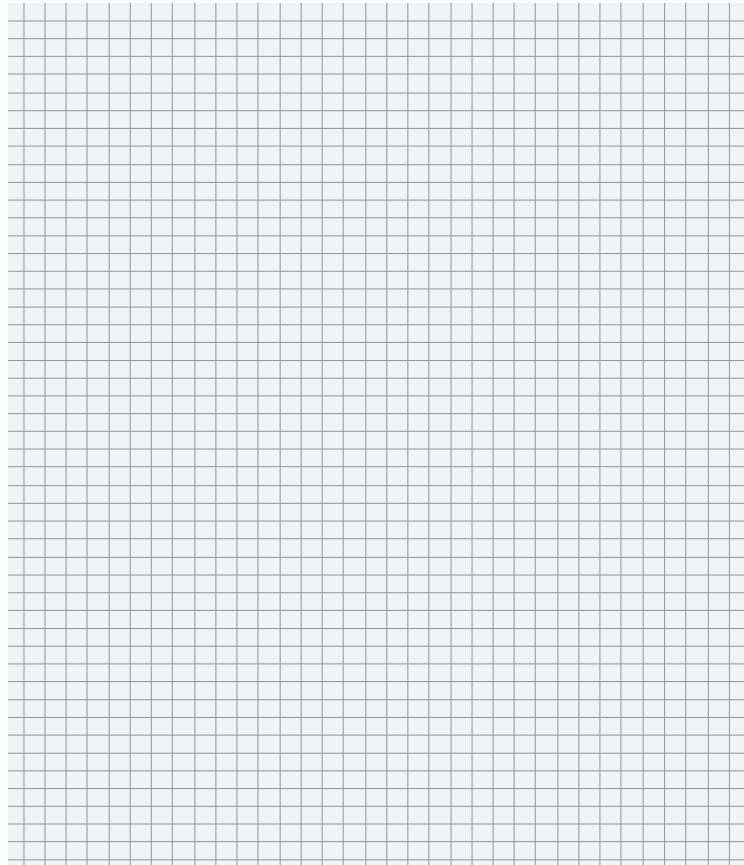


27

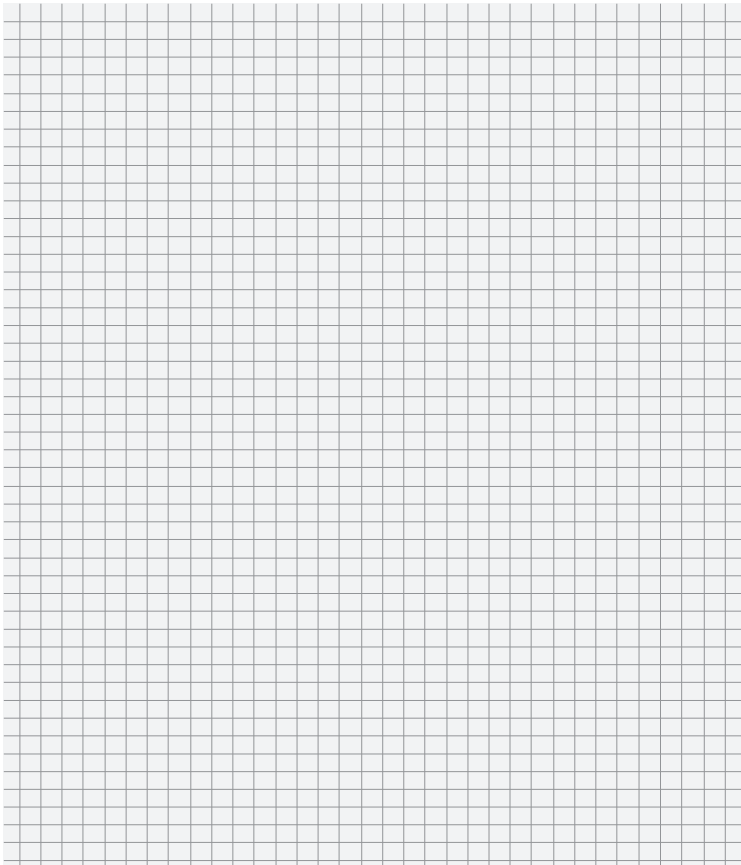


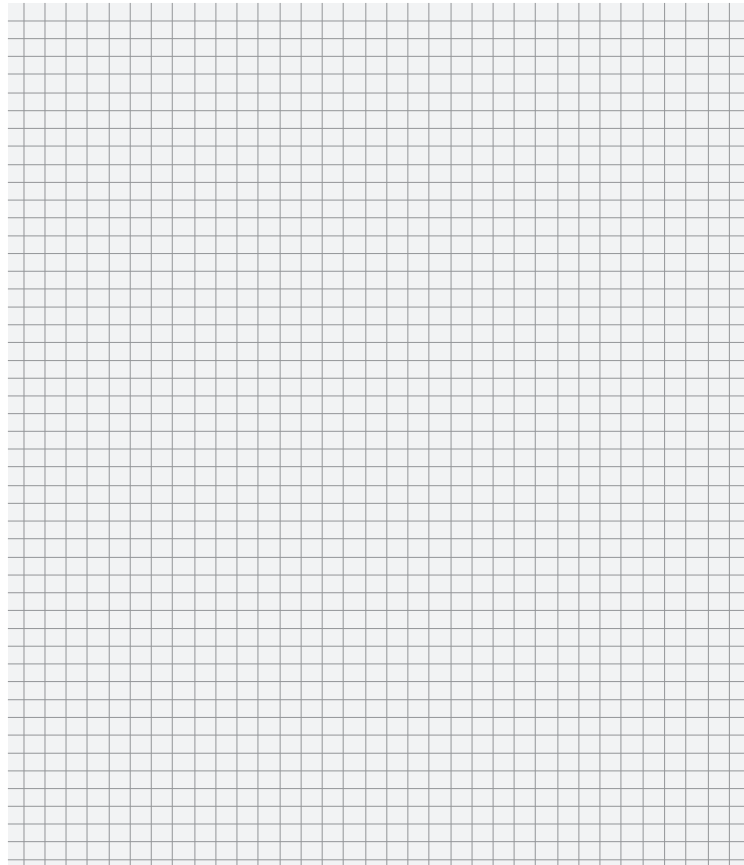














FORTSCHRITT MACHEN

Gebr. Kemper GmbH + Co. KG
Harkortstraße 5
D-57462 Olpe



Service-Hotline +49 2761 891-800
www.kemper-olpe.de
anwendungstechnik@kemper-olpe.de

K410036900030-00 / 11.2021