

## MULTI-THERM PRO

The solution for wireless, digital  
hot water circulation systems

  
**KEMPER**  
DRIVING PROGRESS

# Digitalisation in no time.

With MULTI-THERM PRO

MULTI-THERM is a real success story: the most reliable circulation balancing valve on the market has been setting the standard for the hydraulic balancing of hot water circulation systems since 1997. Thanks to advanced engineering with a thermostatic element, MULTI-THERM ensures reliability, safety and great customer satisfaction in countless installations.

With MULTI-THERM PRO we are continuing this success story into the future by enabling the digitalisation of hot water circulation systems in a revolutionarily simple way.



## That's how easy it is to turn MULTI-THERM into MULTI-THERM PRO

The digital upgrade of existing MULTI-THERM balancing valves with the wireless control module PRO is sustainable, fast, cost-efficient and possible with very little technical effort: Simply

replace the existing thermostatic balancing bonnet with the wireless control module PRO and connect it to the gateway. Done.



No cables thanks to radio technology and energy harvesting



Retrofitting possible without interrupting operation

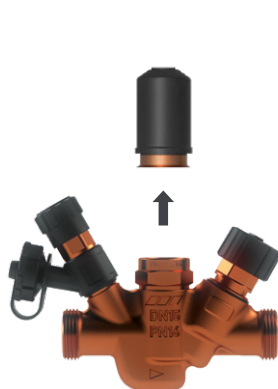


Only one-off activation of the preset settings



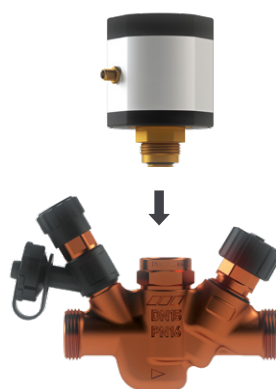
Upgrade possible in less than 60 seconds

### Simple installation.



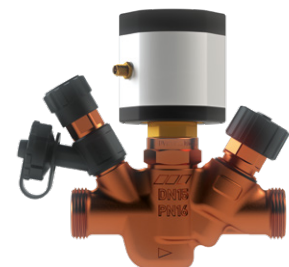
1.

Unscrew the thermostatic control module of the MULTI-THERM



2.

Screw the wireless control module PRO onto the valve



3.

Activate MULTI-THERM PRO once by pressing a button

## This is how digitalisation with MULTI-THERM PRO works.

The wireless control module PRO adds a digital control head to the best-selling circulation balancing valve in the drinking water industry to connect and balance hot water circulation via a central command level. The MULTI-THERM PRO communicates by radio via a "Low Power Wide Area Network", LPWAN for short. Thanks to longer radio waves, this technology also penetrates walls and ceilings, thus ensuring a

stable, secure connection in the whole building - from the roof right down to the lowest level. The connection to the command level or cloud is via a gateway. The wireless control module PRO generates the supply energy autonomously but using the difference between the ambient and media temperature (energy harvesting) - and thus manages without any batteries or connection to the power supply.



INFO



### LPWAN Technology

Permits wireless transmission of the data. Thanks to the strong building penetration, data is transmitted stably to the gateway, even through several floors



### Worldwide Access

The optional connection of the gateway to the cloud allow access to the system via PC, smartphone or tablet from anywhere - without any app or software



### Energy Harvesting Technology

Thanks to the autonomous energy supply, the valve works completely wirelessly. That saves working time, materials and costs



### Digital networking: simply economical.

MULTI-THERM PRO demonstrates that the digital networking of hot water circulation systems doesn't automatically have to be associated with tremendous costs and a lot of work: no wiring for data transport and energy supply, no external temperature sensors.

See more information about our new MULTI-THERM PRO in the video.



## How operators and designers benefit from MULTI-THERM PRO

In the past, controlling temperatures in a hot water circulation system caused a great deal of work: either a lot of cabling for digital monitoring or high levels of personnel deployment if monitored by hand. If temperature control is manual and possibly only irregular, critical temperature fluctuations in the pipework are often not detected on time and a dangerous concentration of legionella bacteria may result.

With MULTI-THERM PRO, you can monitor the temperatures in the system at any time thanks to the integrated sensors and radio technology - completely automated and, thanks to energy harvesting, without any complex wiring. You therefore save high personnel and investment costs. The clear visualisation and logging of the operating status enables the operator to fulfil his proof obligations in no time.



Monitoring and regulation of current temperatures at any time and anywhere



Visualisation of operating statuses and optimisation potentials at any time worldwide via the cloud



No wiring work thanks to wireless technology and energy harvesting



Autonomous function control with analysis of error patterns



Retrofitting of MULTI-THERM installations during operation and without interrupting operations



Design reliability when upgrading: prior calculation is often not needed



Fulfilling the operator's responsibility by function control 24/7"



Fast and sustainable digitalisation of your existing installation with simple exchange

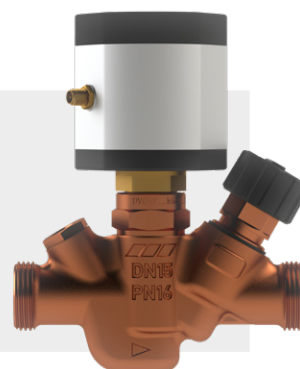
# MULTI-THERM PRO digitalises hot water circulation.

The components for your upgrade, both in existing systems and in new buildings.

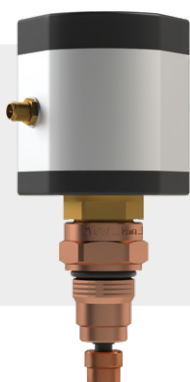
Wireless control module PRO



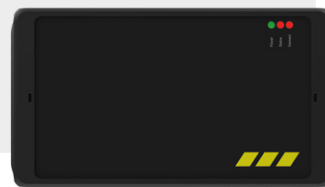
MULTI-THERM PRO



Wireless control bonnet PRO



Gateway



Find a contact partner on our website:



