



***KHS***<sup>®</sup> HYGIENE  
**FLUSH BOX**

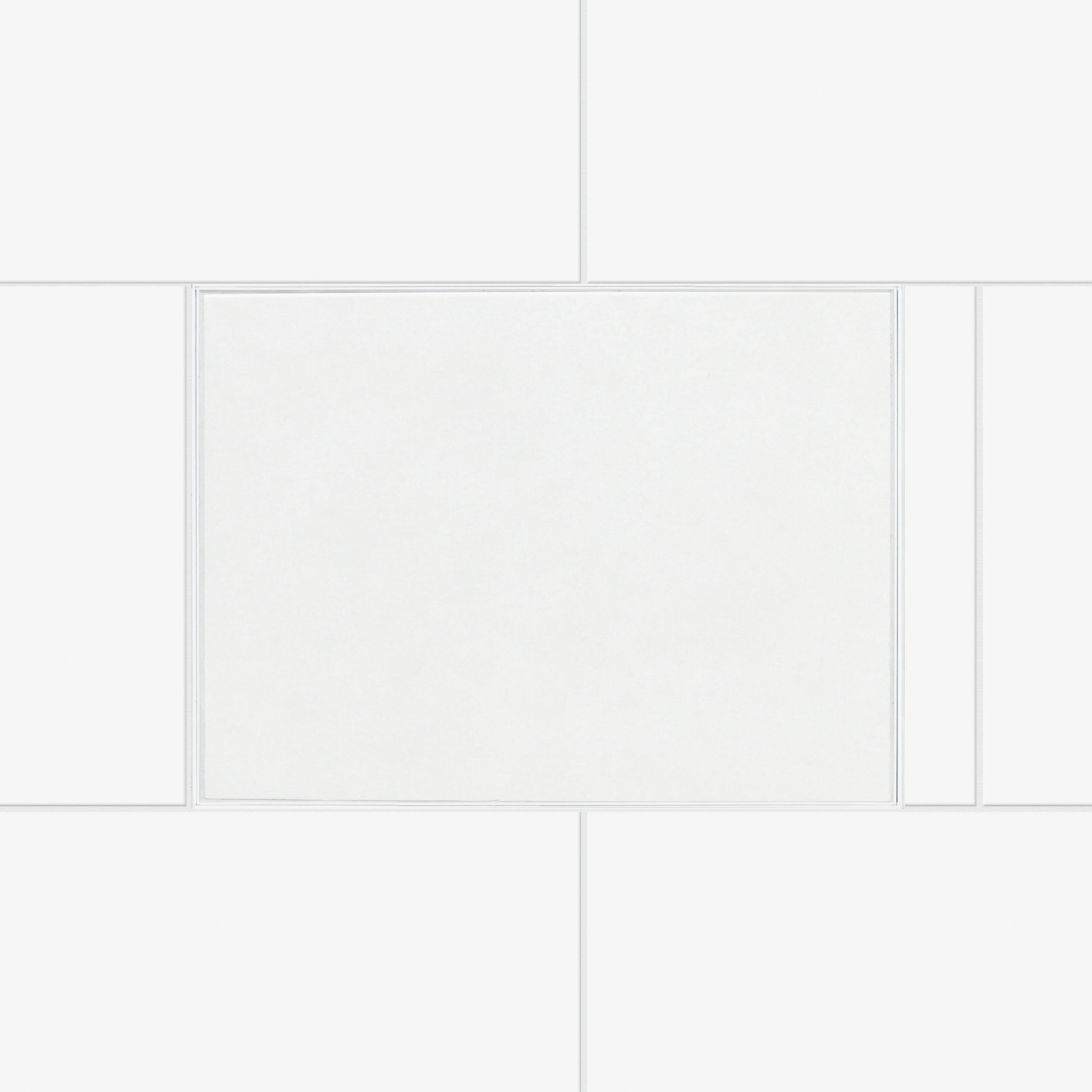


**KEMPER**  
DRIVING PROGRESS

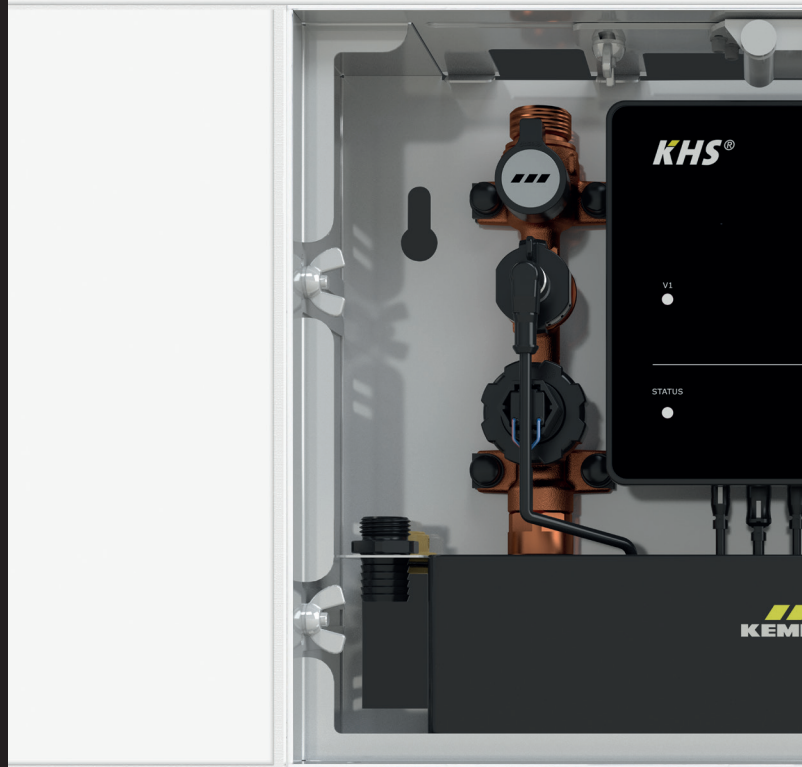


AN INNOVATION  
IS HIDDEN  
AWAY HERE.

**HAVE YOU  
DISCOVERED  
IT YET?**



WE PRESENT:  
**THE NEW  
GENERATION  
OF HYGIENE  
FLUSH BOXES.**



INVISIBLY  
FLUSH-  
MOUNTED OR  
ELEGANTLY  
SURFACE-  
MOUNTED.

**ONE PRODUCT,  
ALL-IN-ONE.**

# Stagnation prevention

Drinking water hygiene has never been so convenient

To ensure the flawless functioning of a building installation, the planner has to take the maximum usage situation into consideration. In practice however this maximum usage is not the usual situation. Stagnating sections and insufficient hygiene in both the cold drinking water (PWC) and hot drinking water (PWH) can be the consequence. Changes in the use of the building or people within the building could have a similar effect. During the lifetime of a building, the actual frequency of withdrawals and volumes deviates strongly from the originally planned values. On top of that, the intended use is no longer guaranteed here.

The new KHS Hygiene Flush Boxes help restore the intended use through controlled "forced withdrawal". The water exchange is controlled by the parameters time, temperature and volume.



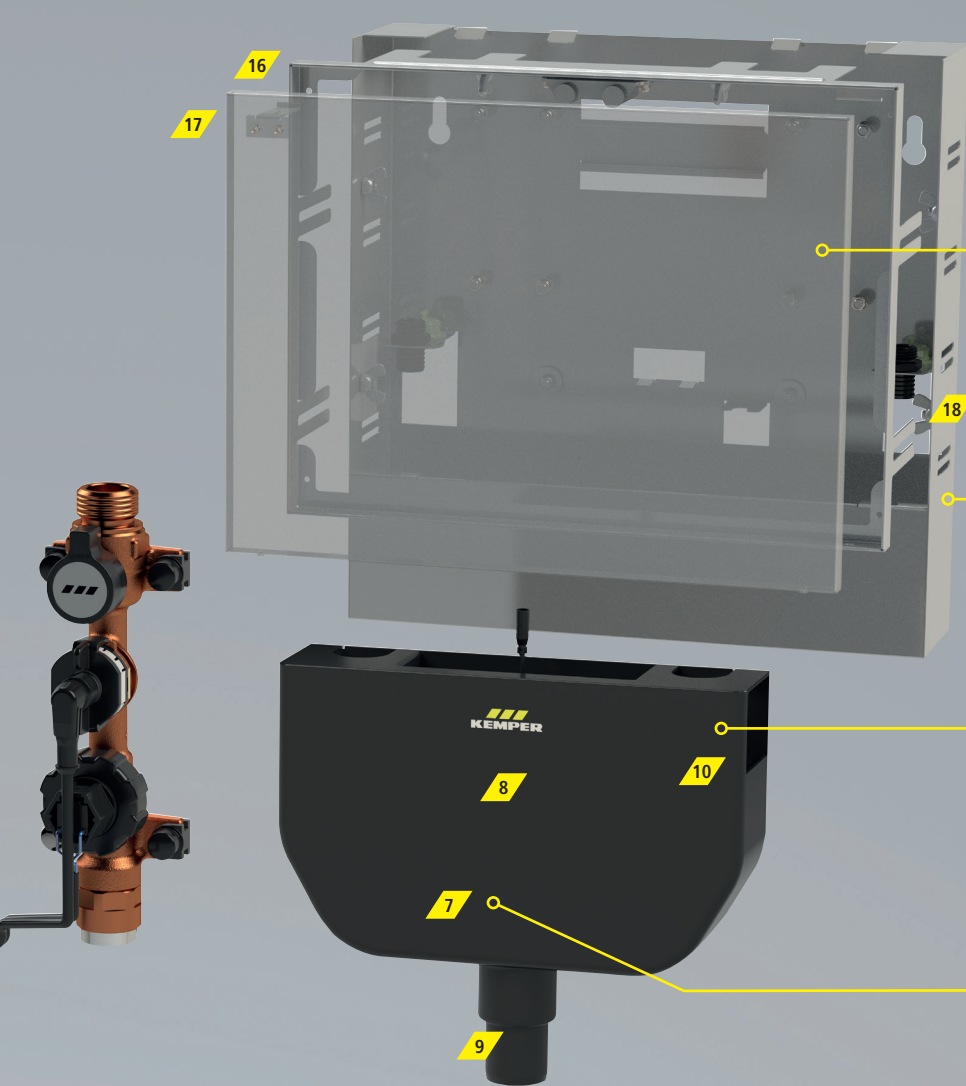
**NO TWO BUILDINGS ARE USED IN THE SAME WAY!**

An economically viable version for every building: PRO / PURE / LITE



**NO FRUSTRATION BECAUSE OF WRONG TOOLS!**

As no tools are required for installation or maintenance.



## BEAUTIFUL BATHROOMS – SHOULD STAY THAT WAY!

TOP HIGHLIGHT: Invisible service opening thanks to innovative flush-mounted solutions!

## ONE HOUSING FOR ALL PURPOSES!

Universal for all installation situations (flush or surface-mounted).

## ULTRA-QUIET WATER EXCHANGE!

Drinking water hygiene good for noise sensitive rooms.

## SIMPLY POWERFUL!

High drainage capacity of the integrated trap > 45 litres/minute.

- |   |   |    |  |    |   |
|---|---|----|--|----|---|
| 1 | PRO controller (external connections all as fixed connections inside the housing) | 9  | Flexibility extends to the nominal width of the drain pipe (DN 40 and DN 50)               | 14 | Solenoid valve with integrated fine screen (TOP ENTRY)                |
| 2 | Buzzer for fault messages   | 10 | Free drain acc. to EN 1717   | 15 | Aerator set incl. flow limiter (variable flow volume 5, 10, 15 l/min) |
| 3 | Mass storage for event log (up to 100,000 entries)                                | 11 | Water exchange group (single or double connection)   | 16 | (Flush-mounted) mounting frame (incl. depth compensation)             |
| 4 | Potential free contact for fault messaging  | 12 | Maintenance cut-off  | 17 | Push-to-open cover (incl. cover lock)                                 |
| 5 | USB interface for convenient data transfer  | 13 | Flow measurement valve and temperature sensor for detection of flushing volume (TOP ENTRY) | 18 | Flushing components for flushing during commissioning                 |
| 6 | LED status display  |    |  |    |   |
| 7 | High-performance siphon (> 45 l/min)  |    |  |    |   |
| 8 | Overflow monitoring   |    |  |    |   |



KHS Hygiene Flush Box PRO  
Figure 689 03 007 (one connection)  
Figure 689 03 008 (two connections)

*for large buildings with special hygiene requirements*

**PRO**

**KHS<sup>®</sup>**

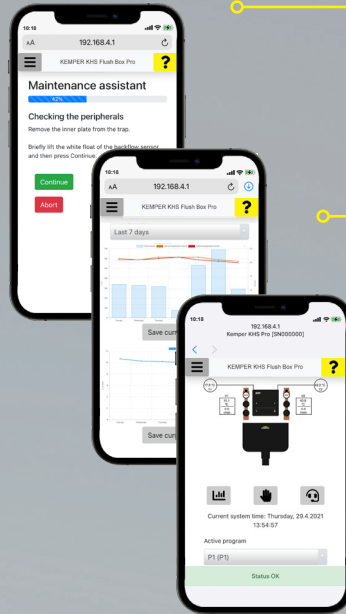
**Hygiene Flush Box  
PRO**





### SAFETY IS A PRIORITY. ALWAYS!

Operational safety 24/7 thanks to continuous checking of all components.



### IT COULDN'T BE EASIER!

Digital commissioning and maintenance assistant.

### KNOW WHAT'S GOING ON!

Graphic display of all sensor values and protocols for easy analysis of the flushing data.

### EVERYTHING AT A GLANCE!

All operating modes of the hygiene flush box are displayed live in the overview.



- // Seven timer for individual flushing strategy in particularly hygiene-sensitive buildings
- // Interval, time, volume, temperature and usage-controlled flushing
- // Convenient and safe operation via WLAN (can be switched off) using the latest Access Point Technology
- // Up to 100,000 event entries to verify use as intended
- // Analysis and log readout via WLAN and USB
- // Networking of up to 60 hygiene flush boxes possible





PURE



### EASY FUNCTIONALITY!

Manual setting of the flushing duration and flushing interval is simply via a push / turn dial.

KHS Hygiene Flush Box PURE  
 Figure 689 03 005  
 (one connection)  
 Figure 689 03 006  
 (two connections)

for time-controlled interval flushing operation in small buildings

# KHS® Hygiene Flush Box PURE

- // Interval controlled flushing
- // Commissioned in less than a minute
- // Up to 100,000 event entries to verify use as intended (readout via USB)
- // Automatic detection and checking of all functional components





LITE



**DON'T WANT A SEPARATE  
CONTROL FOR THE DEVICE?**

Full direct control of all  
components!

**KHS Hygiene Flush Box LITE**  
Figure 689 03 009  
(one connection)  
Figure 689 03 010  
(two connections)

for safety-sensitive buildings

**KHS®**

# Hygiene Flush Box LITE

- // No integrated controller logic
- // Own control for direct connection to  
building automation systems / BMS



# Installation and assembly options

One Hygiene Flush Box for all purposes

KEMPER Hygiene Flush Boxes can be installed surface-mounted or flush-mounted without additional accessories. Thanks to the innovative housing concept, all versions of the Hygiene Flush Box can be either integrated almost invisibly flush-mounted into the wall structure or installed elegantly surface-mounted on the wall.



What's more, the technology behind the Hygiene Flush Boxes is so sophisticated that comfort is assured – to maintain intended use, the controlled water exchange is ultra-quiet.

## INSTALLATION OPTION

### SERIAL INSTALLATION

// one Hygiene Flush Box per bathroom

### FLOW-SPLITTER INSTALLATION

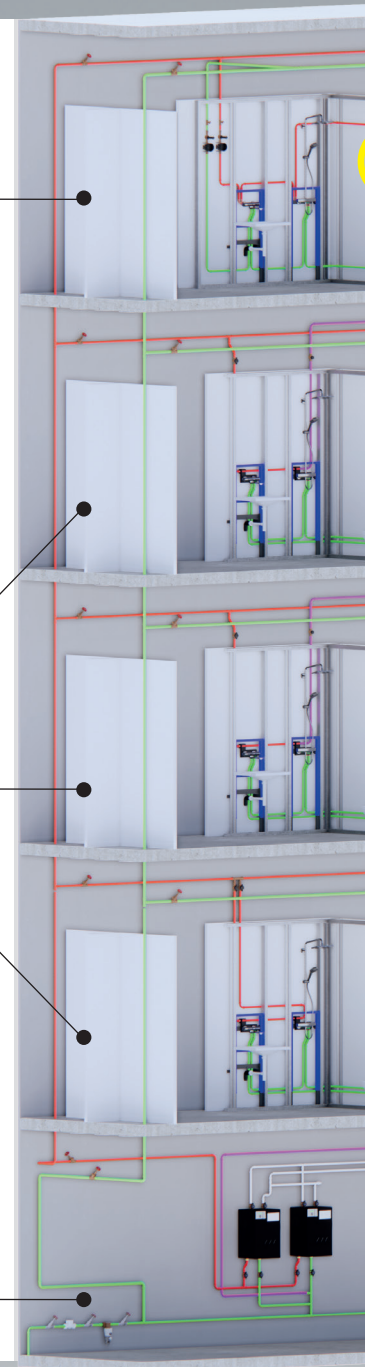
// incl. downstream fixture with high usage  
// one **centralised** Hygiene Flush Box in the basement

// incl. downstream fixture with high usage  
// one **decentralised** Hygiene Flush Box on the floor

// one **decentralised** Hygiene Flush Box on the floor

### SELDOM USED FIXTURES

// one downstream Hygiene Flush Box in the technical area





**Practically invisible when flush mounted**  
 // integration in the backplash



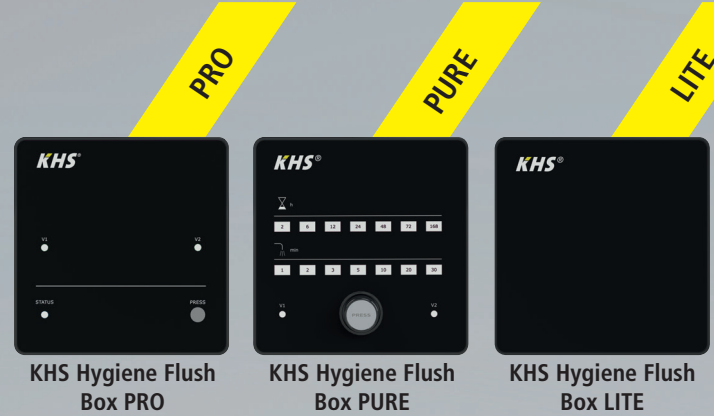
**Practically invisible when flush mounted**  
 // integration in drywall plasterboard



**Elegant when surface-mounted**  
 // due to compact design  
 // no accessories necessary  
 // Networking of several Hygiene Flush Boxes using  
 KHS Mini-Control System MASTER 2.0  
 // Installation on a solid wall

# Quick guide to KHS Hygiene Flush Box

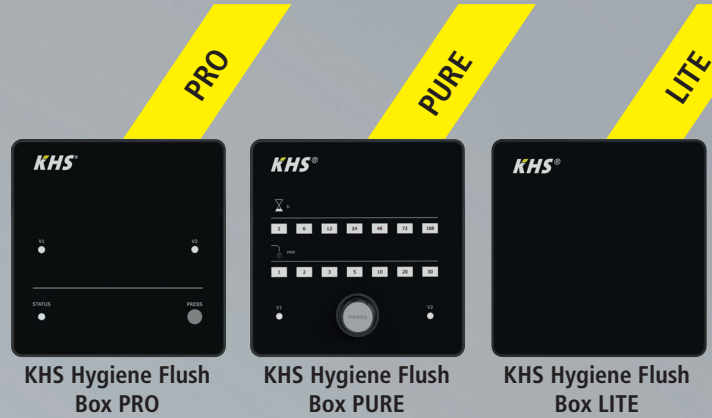
Compare models at a glance



	KHS Hygiene Flush Box PRO	KHS Hygiene Flush Box PURE	KHS Hygiene Flush Box LITE	
Operating modes	Time control	✓	✓*	
	Interval control	✓	✓	✓*
	Volume control	✓		✓*
	Temperature control	✓		✓*
	Usage-orientated control	✓		✓*
Control	Operation via WLAN (can be deactivated) using Access Point Technology	✓		
	Operation via the controller		✓	
	CAN bus networking possible	✓		
	Incorporation into BMS (BACnet & Modbus) via KEMPER Hygiene System KHS	✓		
	Direct control via BMS (24V/4-20 mA)			✓
	Integration into BMS via digital I/O	✓		
	Potential free contact for fault messaging	✓	✓	✓
Features	Digital assistant for commissioning and maintenance	✓		
	Automatic functional testing of all components (24/7)	✓		
	Data storage (up to 100,000 event entries)	✓	✓	
	Data transfer via USB interface	✓	✓	
	Data transfer via WLAN	✓		
Visualised flushing history	✓			

\* depending on external flushing logic

An economically viable version for every building:



	KHS Hygiene Flush Box PRO	KHS Hygiene Flush Box PURE	KHS Hygiene Flush Box LITE
Hospitals	✓		✓
Care facilities	✓		
Geriatric care	✓		
Residential buildings	✓	✓	
Halls of residence	✓	✓	
Hotels	✓		
Detention centres	✓		✓
Accommodation blocks (e.g. military)	✓		✓
Schools	✓	✓	
Sports facilities	✓	✓	
Kindergartens	✓	✓	
Laboratories	✓		
Industrial buildings	✓		✓
Department stores	✓		✓
Swimming pools	✓		
Interim solutions		✓	

✓ needs external control, e.g. KHS Mini-Control System MASTER 2.0 (Figure 686.02.008)

Approvals:



kiwa





Gebr. Kemper GmbH + Co. KG  
Harkortstraße 5  
57462 Olpe / Germany

Phone +49 2761 891-0  
info@kemper-group.com  
www.kemper-group.com

