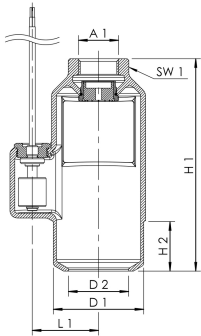
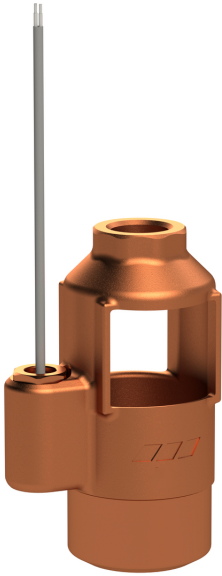


## Product Features

- to protect against overflow due to drain block
- wetted metal parts made from dezincification-free and corrosion-resistant gunmetal, resistant against aggressive water
- easy maintenance while installed
- for connection to KHS control systems, KHS timer set and leak detection systems
- for use in combination with KHS quarter turn stop valves
- female pipe thread
- free drain according to EN 1717 with integrated overflow sensor
- overflow sensor as NCC in delivery status, can be changed to NOC when turned
- for vertical installation



## Standards and Approvals

- WRAS approval
- according to accepted materials list from German environmental agency
- ÜA-Reg.-Nr. R-15.2.3-21-17048, WIEN-ZERT

## Technical data

- protection class IP68
- switching capacity 230 V, 0,04 A
- length of connection cable 1 m
- wire cross section 2 x 0.25 mm<sup>2</sup>

Part no.	for DN	A1	D1 (mm)	D2 (mm)	H1 (mm)	H2 (mm)	L1 (mm)	SW1 (mm)	nominal connection diameter, waste water (mm)	kg
6880002000	15-20	Rp 3/4	75	50	176	41	55	48	75	1.55
6880002500	25	Rp 1	75	50	176	41	55	48	75	1.52
6880003200	32	Rp 1 1/4	75	50	176	41	55	48	75	1.44

## Spare parts

- spare parts set aerator for free drain until 07/2017, figure 688 01 001
- spare parts set areator for free drain from 07/2017, figure 688 02 001
- spare parts set float switch for free drain, figure 688 00 001