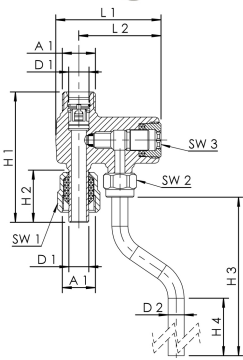




### Product Features

- to sample drinking water and determine microbiological parameters according to the German TrinkwV drinking-water regulation
- for simple retrofitting at the output of the angle valve
- suitable for angle valves with 10 mm outlet compression connection
- sampling pipe can be disinfected by flame
- valve completely chrome-plated
- PTFE seat gasket
- inlet 10 x 1.25 pipe, outlet G3/8 male thread with compression nut for 10 mm pipe
- with integrated check cartridge type EB acc. EN 1717
- valve is operated with 5 mm allen key (not in package)
- made of brass, nickel plated
- free from dead spots
- incl. Allen key



### Standards and Approvals

- DVGW approval
- plastic parts with KTW and W 270 approval
- according to accepted materials list from German environmental agency
- UBA BWGL Metalle + DVGW W 551-8

### Technical data

- pressure rating PN 10
- max. operating temperature 90 °C

Part no.	DN	A1	D1 (mm)	D2 (mm)	H1 (mm)	H2 (mm)	H3 (mm)	H4 (mm)	L1 (mm)	L2 (mm)	SW1 (mm)	SW2 (mm)	SW3	kg
1880101000	10	G 3/8	10	8	65	26	161	110.5	52.5	41	19	15	5	0.30

### Spare parts

- drain elbow for angled sampling valve, figure 188 99 002
- CV cartridge for angled sampling valve, figure 188 99 001