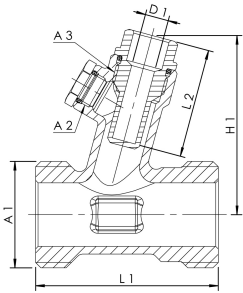


### Product Features

- wetted metal parts made from dezincification-free and corrosion-resistant gunmetal, resistant against aggressive water
- plugged port for optional installation of a drain- or sampling valve
- 9mm immersion sleeve for thermometer or Pt1000
- G 1/4 for assembly of a sampling valve or a drain valve
- full bore
- male union thread
- free from dead spots
- for any installation position



### Technical data

- pressure rating PN 16
- max. operating temperature 90 °C

| Part no.   | DN | A1      | A2    | A3    | D1<br>(mm) | H1<br>(mm) | L1<br>(mm) | L2<br>(mm) | kg   |
|------------|----|---------|-------|-------|------------|------------|------------|------------|------|
| 1280G01500 | 15 | G 3/4   | G 1/4 | G 1/2 | 9          | 65         | 65         | 43         | 0.29 |
| 1280G02000 | 20 | G 1     | G 1/4 | G 1/2 | 9          | 69         | 67         | 43         | 0.35 |
| 1280G02500 | 25 | G 1 1/4 | G 1/4 | G 1/2 | 9          | 71         | 72         | 43         | 0.49 |
| 1280G03200 | 32 | G 1 1/2 | G 1/4 | G 1/2 | 9          | 73         | 77         | 43         | 0.55 |
| 1280G04000 | 40 | G 1 3/4 | G 1/4 | G 1/2 | 9          | 80         | 82         | 43         | 0.63 |
| 1280G05000 | 50 | G 2 3/8 | G 1/4 | G 1/2 | 9          | 89         | 90         | 43         | 1.00 |

### Accessories

- gunmetal sampling valve, figure 187 00
- gunmetal solder union connector, figure 476 04
- gunmetal union connector, union nut, figure 476 06
- gunmetal union connector, union nut, FPT, with drain valve, figure 476 07
- gunmetal union connector, union nut, MPT, figure 476 08
- solder / pressfit union connector, figure 476 14
- pressfit union connector, MAPRESS stainless steel and copper, figure 476 22
- pressfit union connector, SANPRESS and PROFIPRESS, figure 476 30
- pressfit union connector, SANHA and NiroSan, figure 476 35
- pressfit union connector, MEPLA, figure 476 40
- pressfit union connector, MAPRESS stainless steel, figure 476 20
- pressfit union connector, SANPRESS INOX, figure 476 70
- adaptor, double union nut, figure 101 06
- drain valve made of gunmetal/plastic, figure J7109 173 00
- Pt 1000 temperature sensor, figure T5100 140 00
- dial thermometer, figure T5100 150 00
- insulation shell for MULTI T-PIECE, figure 471 28

### Spare parts

- threaded plug , figure J8101 173 00