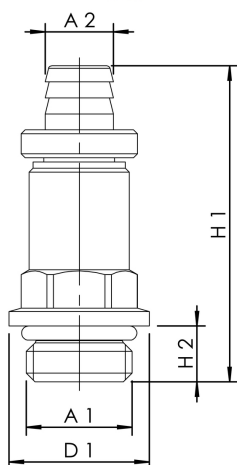




### Product Features

- can be attached to all Kemper valves with test/drain-port
- wetted metal parts made from dezincification-free and corrosion-resistant gunmetal, resistant against aggressive water
- EPDM-seat gasket



### Technical data

- max. operating temperature 110 °C

Part no.	DN	for DN	for DN with flange valves	A1	A2 (mm)	D1 (mm)	H1 (mm)	H2 (mm)	kg
J7109170000600	8	15-50	15-25	G 1/4	8.5	17.5	39.5	7	0.03