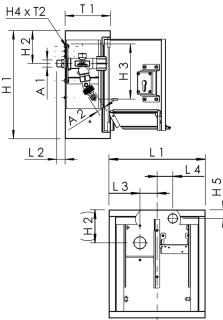




Product Features

- configuration:
 - hose bibb
 - socket 230 V
- wetted metal parts made of dezincification-free and corrosion-resistant gunmetal (in closed position), resistant against aggressive water
- lockable, stainless steel, polished surface
- as supply unit to the central power and water supply
- with SCHUKO surface-mounted socket
- frame with door with profile cylinder lock as a key lock including bit keys
- retrofittable and interchangeable on an existing locking system
- can be converted on site to CH-KABA lock design
- door with integrated flap version for hose or cable connection for security even during operation
- maintenance-free EPDM spindle seal
- cone with internal CV spring
- can be extended to any length at construction site
- integrated CV and tube aerator as a security combination HD
- male pipe thread
- actuating grip with blue identification plate
- free from dead spots
- incl. hose coupling for common connection systems
- lock with uniform key number on request, other configurations on request



Standards and Approvals

- valve with DVGW approval
- Valve with ÖVGW approval
- valve with SVGW approval
- Valve with KIWA approval
- plastic parts with KTW and W 270 approval
- according to accepted materials list from German environmental agency
- soundproofing certification according to DIN EN ISO 3822 Class 1
- DIN EN 15096 family H, type B / EN 1717 / DIN EN 13959

Technical data

- pressure rating PN 16
- protection class IP44

| Part no. | DN | A1 | A2 | H1 (mm) | H2 (mm) | H3 (mm) | H4 (mm) | H5 (mm) | L1 (mm) | L2 (mm) | L3 (mm) | L4 (mm) | T1 (mm) | T2 (mm) | flow at 0.05 Mpa (l/s) |
|------------|----|-------|-------|---------|---------|---------|---------|---------|---------|---------|---------|---------|---------|---------|------------------------|
| 2120901500 | 15 | R 1/2 | G 3/4 | 315 | 96 | 160 | 114 | 25 | 280 | 25 | 50 | 45.5 | 132 | 56 | 0.4 |

| Part no. | flow at 0.1 MPa (l/s) | flow at 0.15 Mpa (l/s) | kg |
|------------|-----------------------|------------------------|------|
| 2120901500 | 0.67 | 0.8 | 7.38 |

Spare parts

- TRESOR lock with uniform key number, figure 210 99 003
- TRESOR lock, figure 210 99 002
- operating cap, figure 590 03 001
- hose coupling for Wall-Cabinets TRESOR, figure G3101 210 07
- TRESOR lock cylinder case, figure 210 98 001