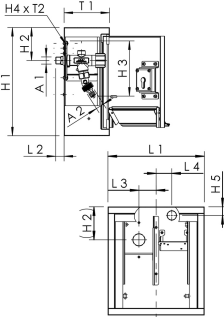




Product Features

- configuration:
 - hose bibb
 - no socket
- wetted metal parts made of dezincification-free and corrosion-resistant gunmetal (in closed position), resistant against aggressive water
- lockable, stainless steel, polished surface
- as supply unit to central water supply
- frame with door with profile cylinder lock as a key lock including bit keys
- retrofittable and interchangeable on an existing locking system
- can be converted on site to CH-KABA lock design
- door with integrated flap version for hose or cable connection for security even during operation
- maintenance-free EPDM spindle seal
- cone with internal CV spring
- can be extended to any length at construction site
- integrated CV and tube aerator as a security combination HD
- male pipe thread
- actuating grip with blue identification plate
- free from dead spots
- incl. hose coupling for common connection systems
- lock with uniform key number on request, other configurations on request



Standards and Approvals

- valve with DVGW approval
- Valve with ÖVGW approval
- valve with SVGW approval
- Valve with KIWA approval
- plastic parts with KTW and W 270 approval
- according to accepted materials list from German environmental agency
- soundproofing certification according to DIN EN ISO 3822 Class 1
- DIN EN 15096 family H, type B / EN 1717 / DIN EN 13959

Technical data

- pressure rating PN 16

Part no.	DN	A1	A2	H1 (mm)	H2 (mm)	H3 (mm)	H4 (mm)	H5 (mm)	L1 (mm)	L2 (mm)	L3 (mm)	L4 (mm)	T1 (mm)	T2 (mm)	flow at 0.05 Mpa (l/s)
2120801500	15	R 1/2	G 3/4	315	96	160	114	25	280	25	50	45.5	132	56	0.4

Part no.	flow at 0.1 MPa (l/s)	flow at 0.15 Mpa (l/s)	kg
2120801500	0.67	0.8	7.2

Spare parts

- TRESOR lock with uniform key number, figure 210 99 003
- TRESOR lock, figure 210 99 002
- operating cap, figure 590 03 001
- hose coupling for Wall-Cabinets TRESOR, figure G3101 210 07
- TRESOR lock cylinder case, figure 210 98 001