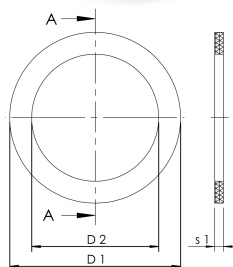


### Atributy výrobku

- hodí se pro šroubové spoje podle Figury 476



| Obj.č.          | pro DN | Vnější průměr | D1<br>(mm) | D2<br>(mm) | S1<br>(mm) | Vnitřní průměr | kg   |
|-----------------|--------|---------------|------------|------------|------------|----------------|------|
| C31004760701500 | 15     | 24            | 24         | 17         | 2          | 17             | 0    |
| C31004760702000 | 20     | 30            | 30         | 23         | 2          | 23             | 0    |
| C31004760702500 | 25     | 39            | 39         | 29         | 2          | 29             | 0    |
| C31004760703200 | 32     | 44.5          | 44.5       | 35         | 2          | 35             | 0    |
| C31004760704000 | 40     | 50.5          | 50.5       | 41         | 2          | 41             | 0    |
| C31004760705000 | 50     | 66            | 66         | 53         | 3          | 53             | 0    |
| C31004760706500 | 65     | 84.7          | 84.7       | 73         | 3          | 73             | 0.01 |
| C31004760708000 | 80     | 97            | 97         | 84         | 3          | 84             | 0.01 |